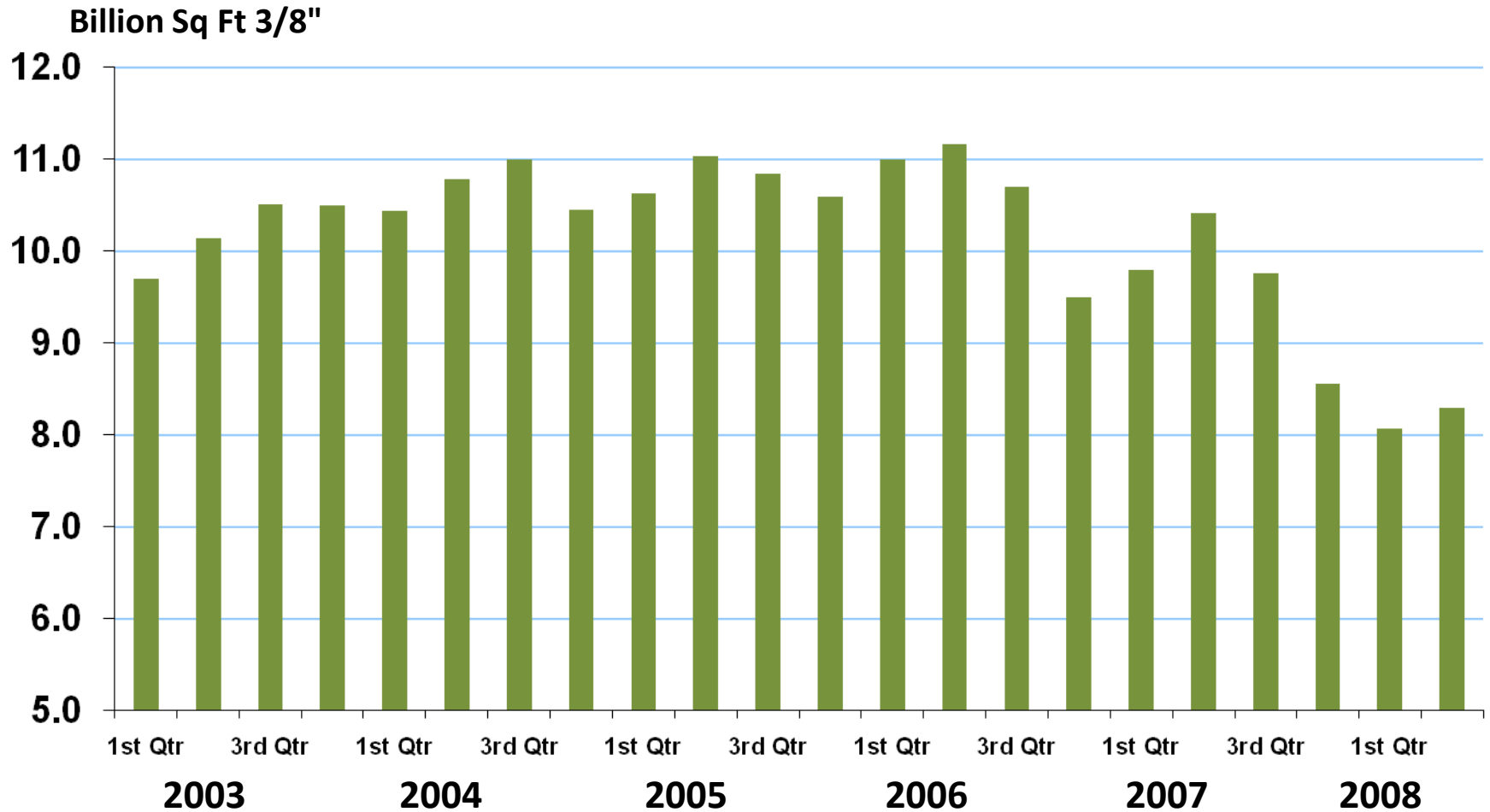


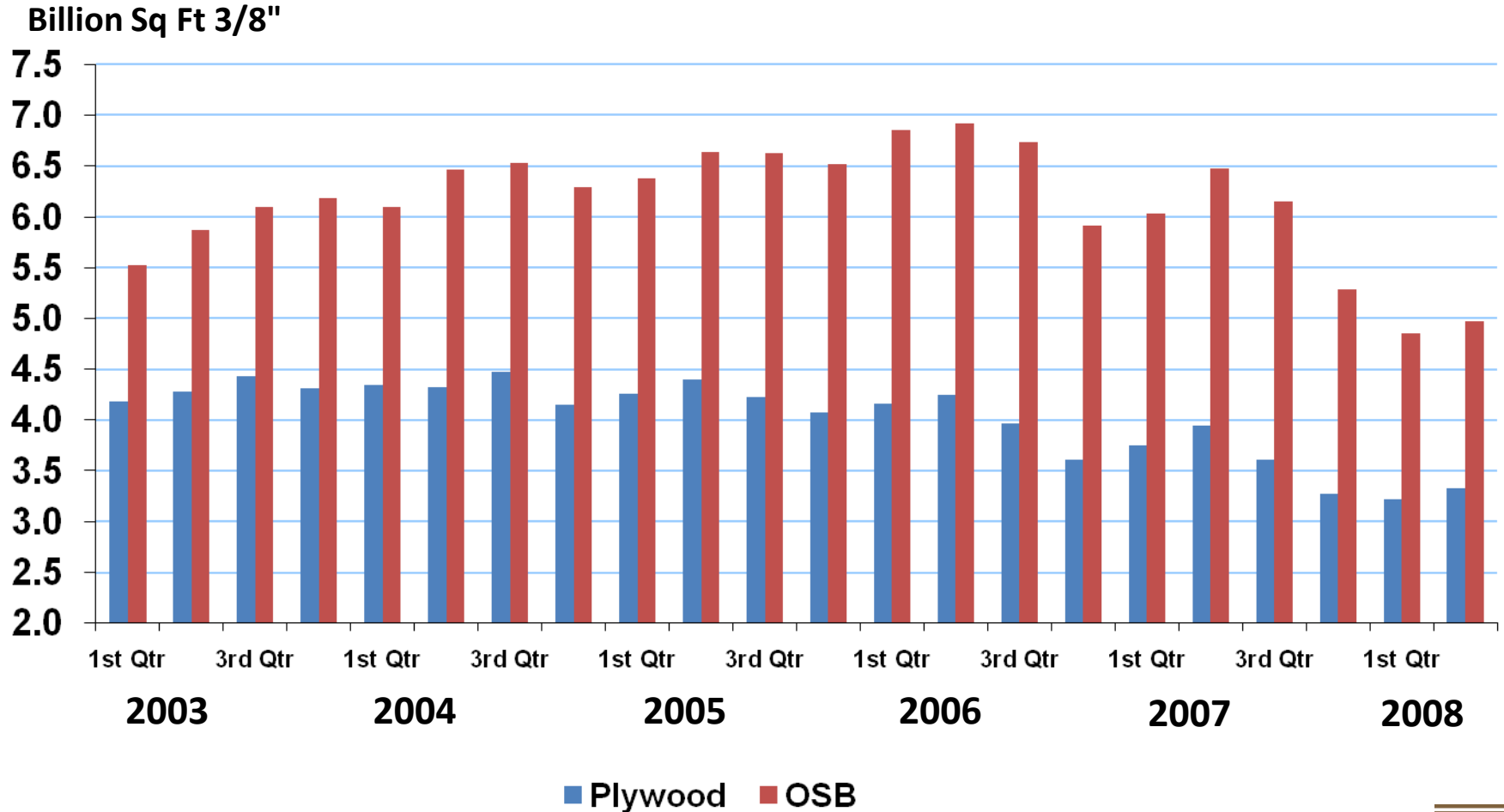
Quarterly Production

Structural Panels and Engineered Wood

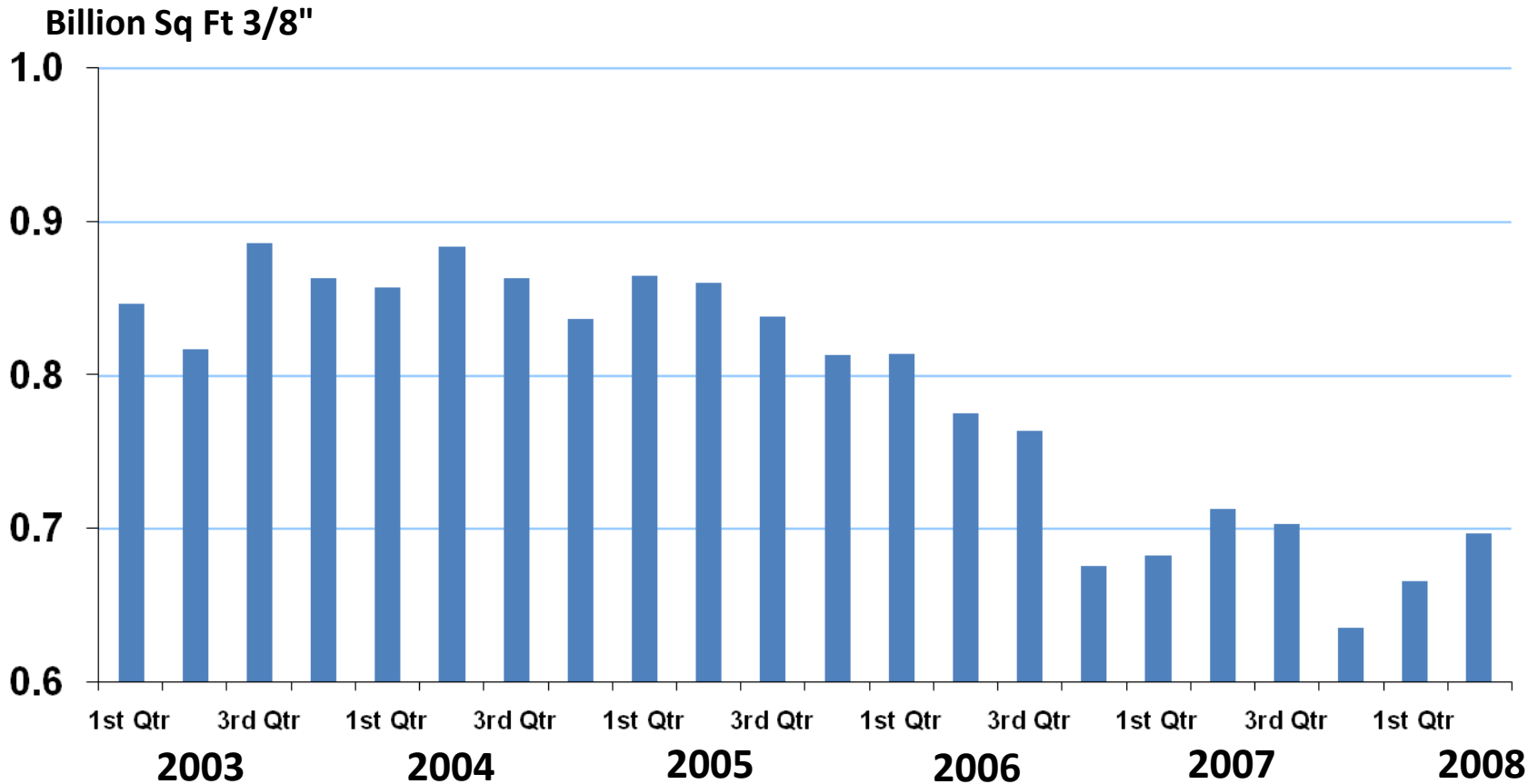
Total North America Structural Panel Production



North America Plywood & OSB Production

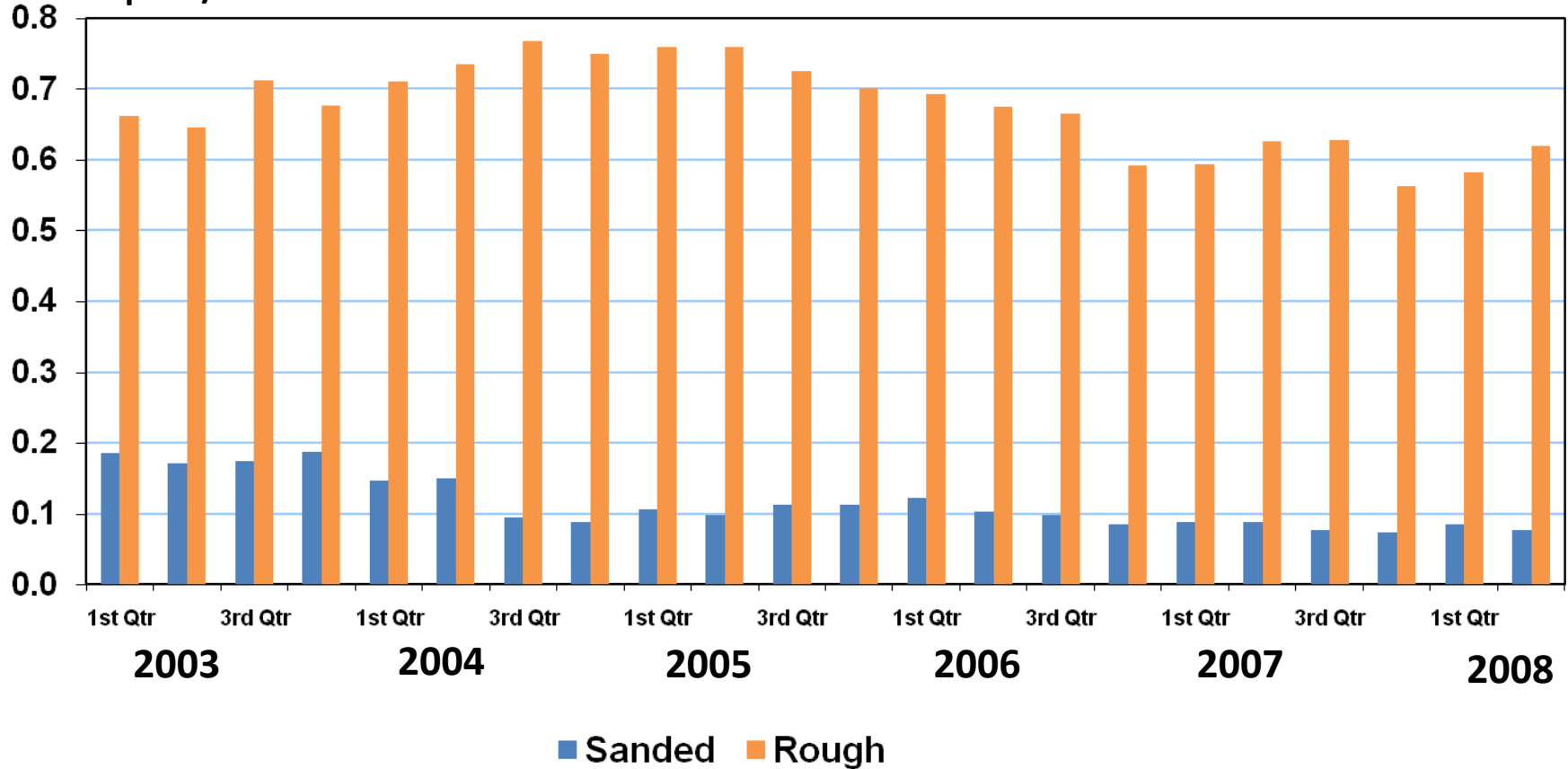


Total Western Plywood Production

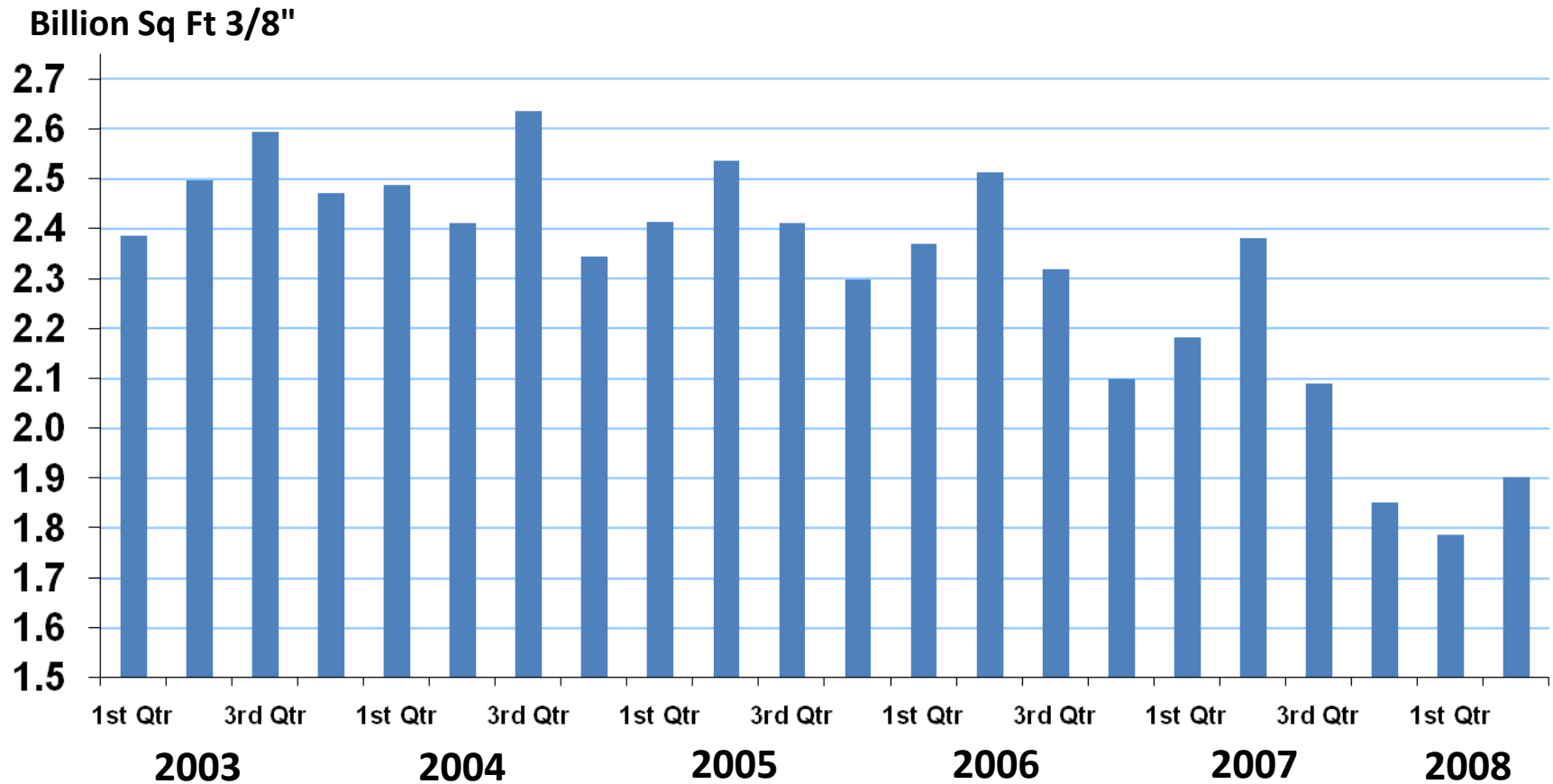


Western Sanded and Rough Production

Billion Sq Ft 3/8"

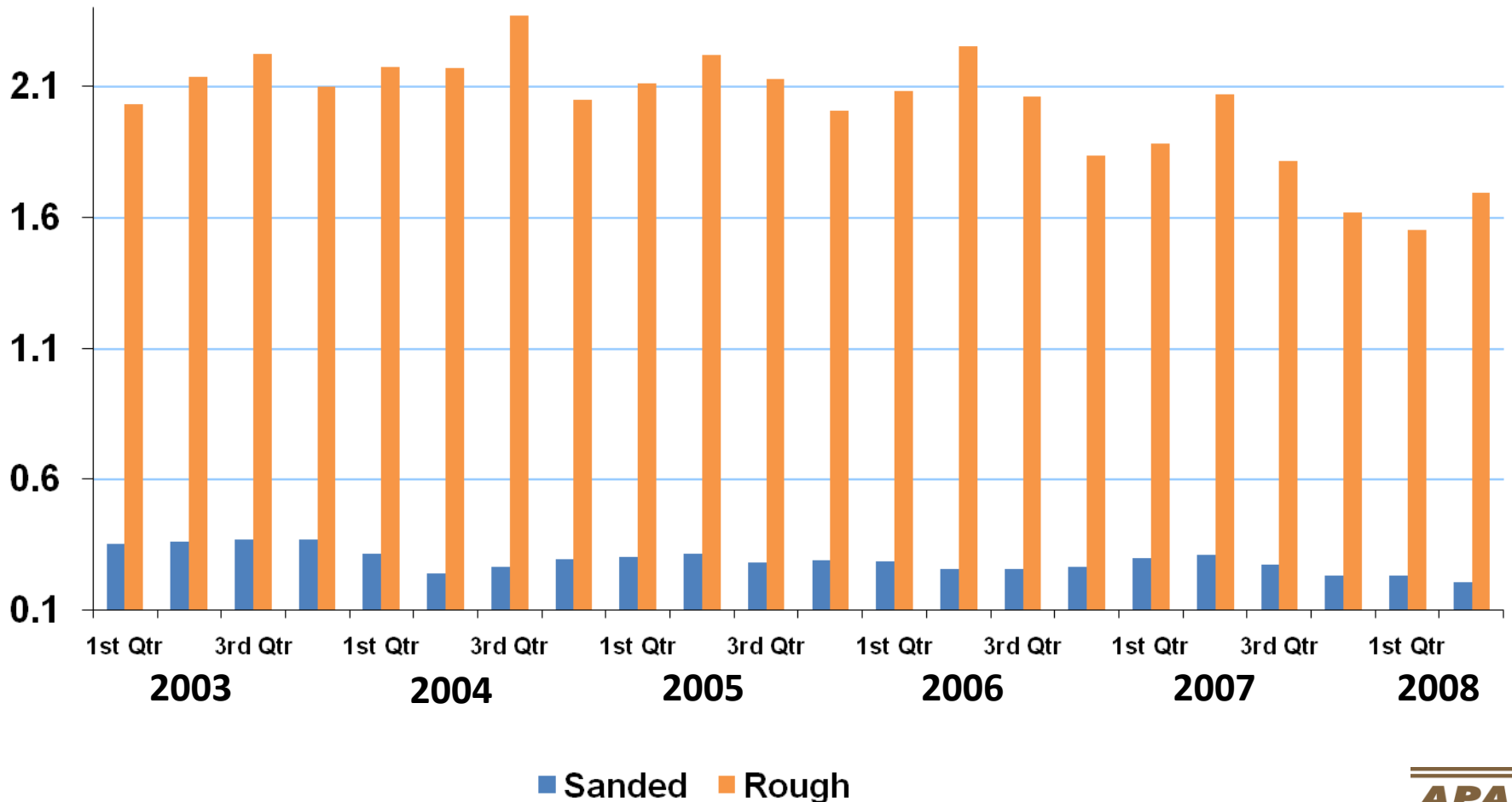


Total Southern Plywood Production



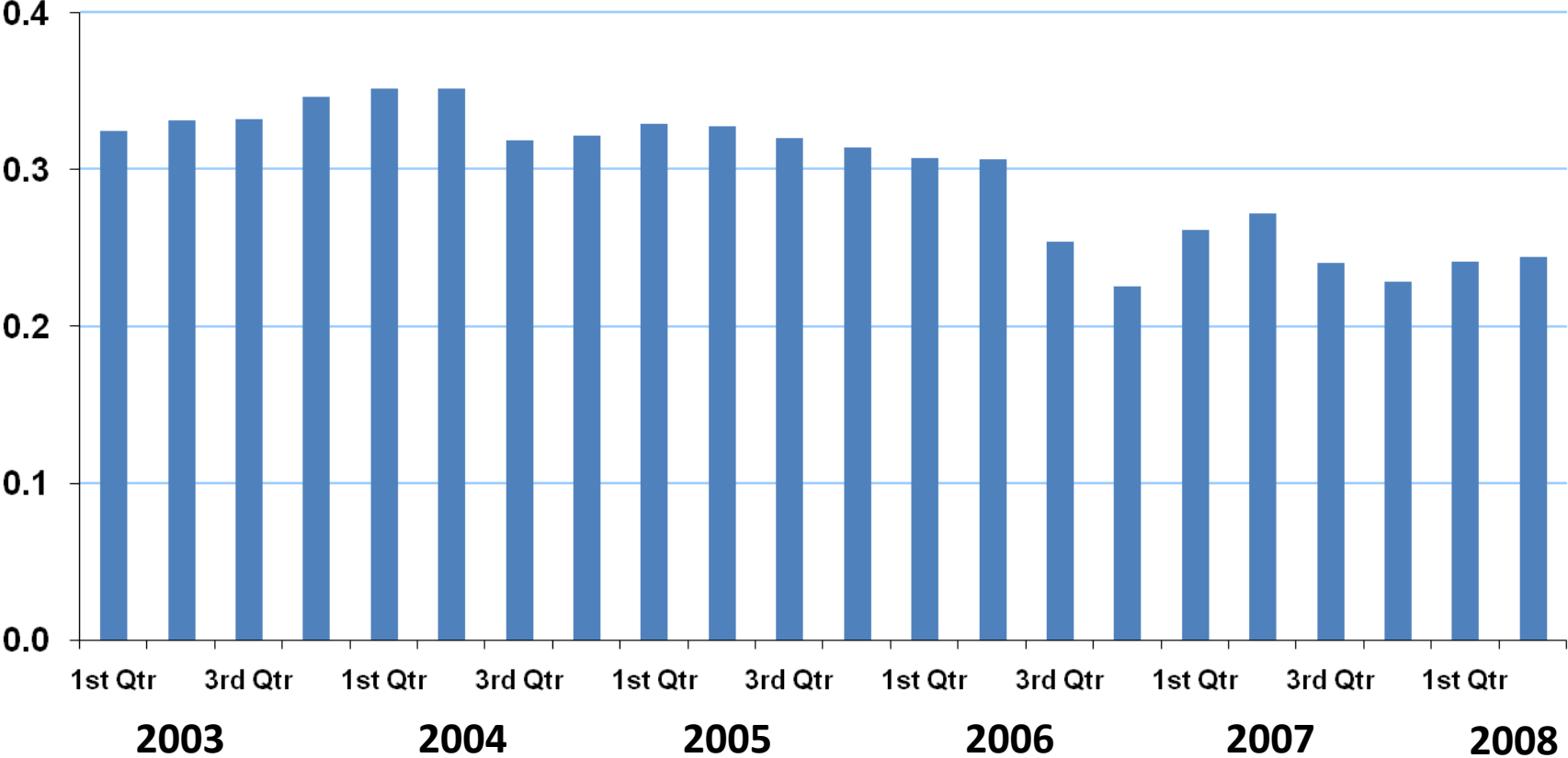
Southern Sanded and Rough Production

Billion Sq Ft 3/8"

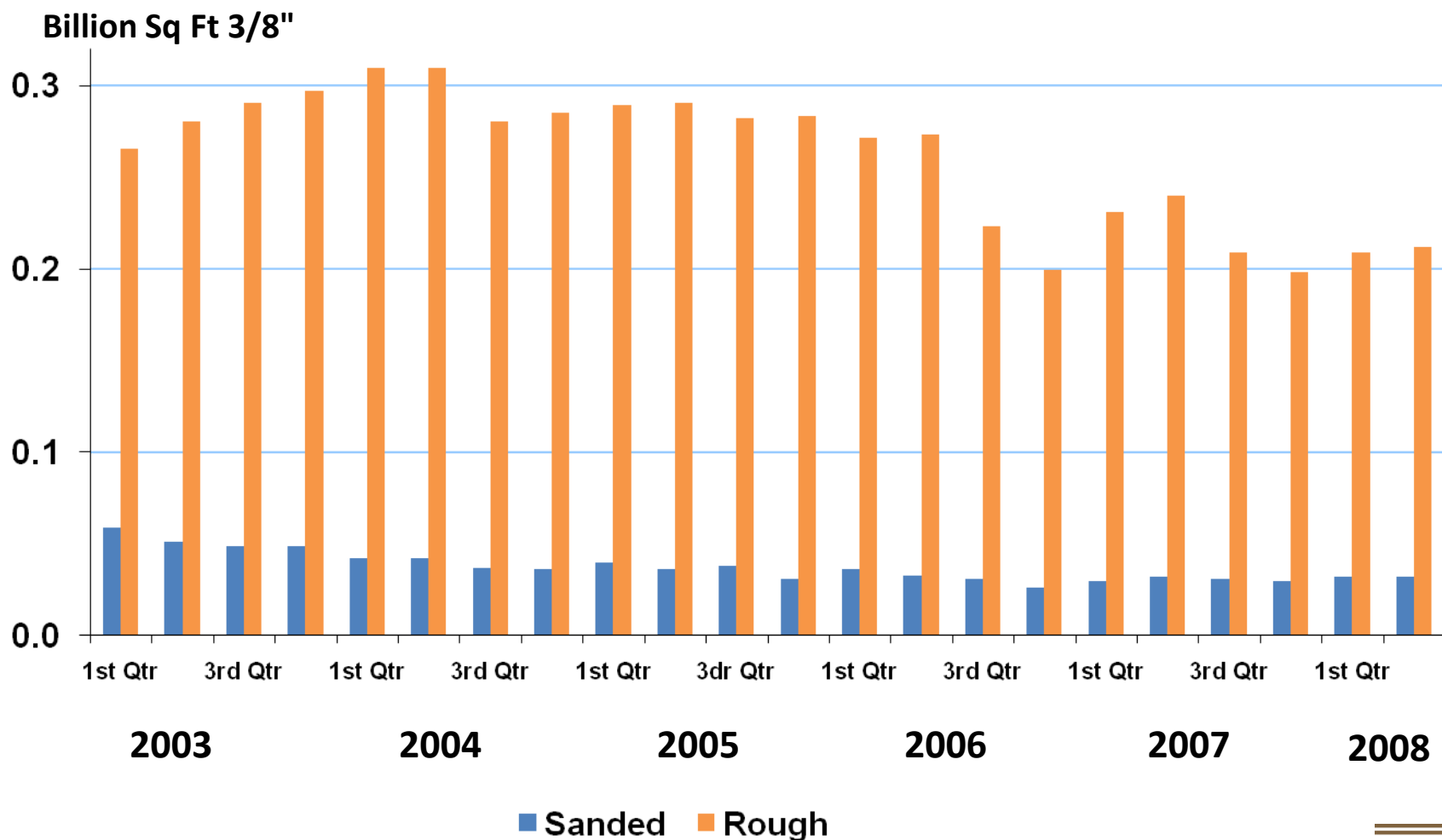


Total Inland Plywood Production

Billion Sq Ft 3/8"

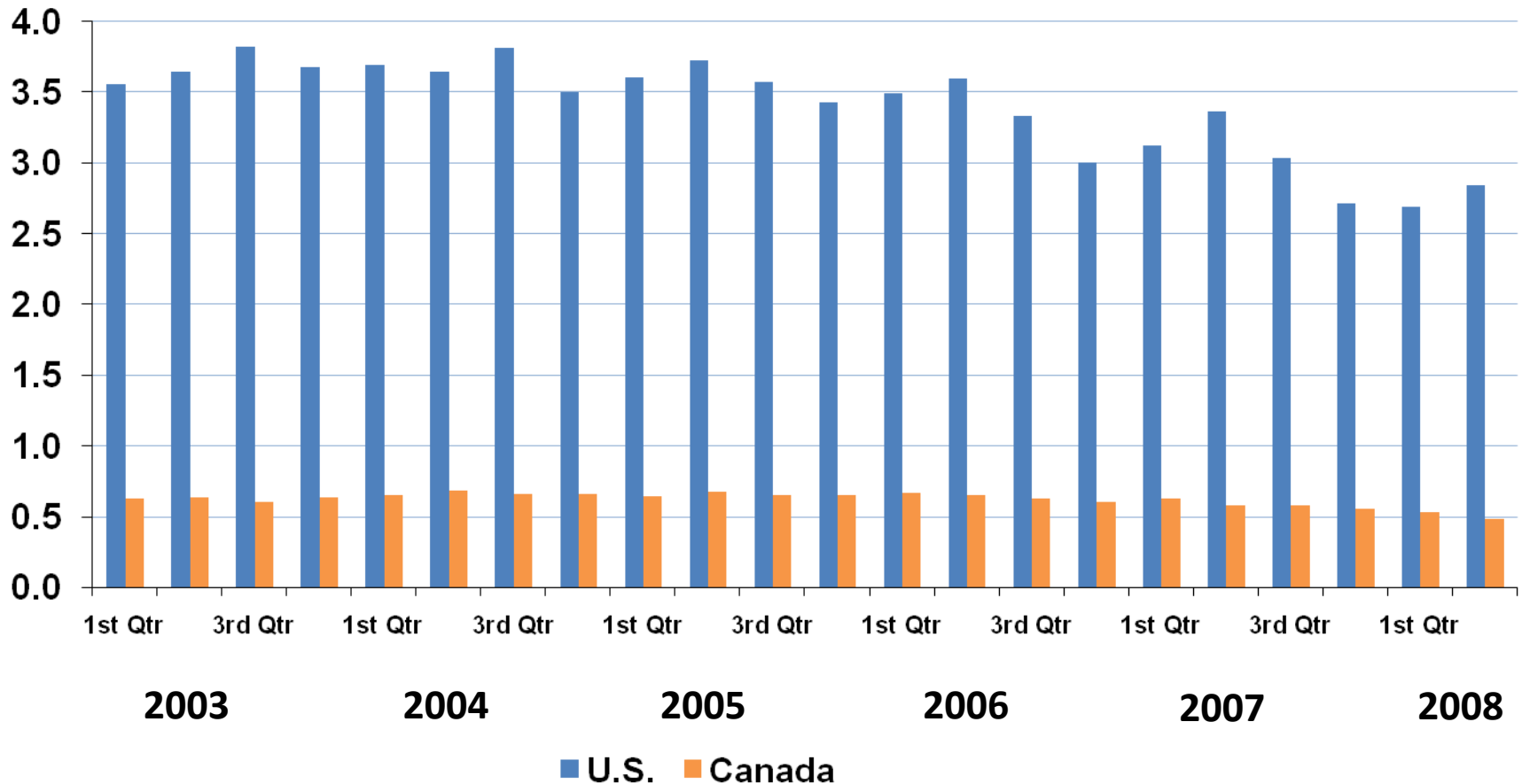


Inland Sanded and Rough Production



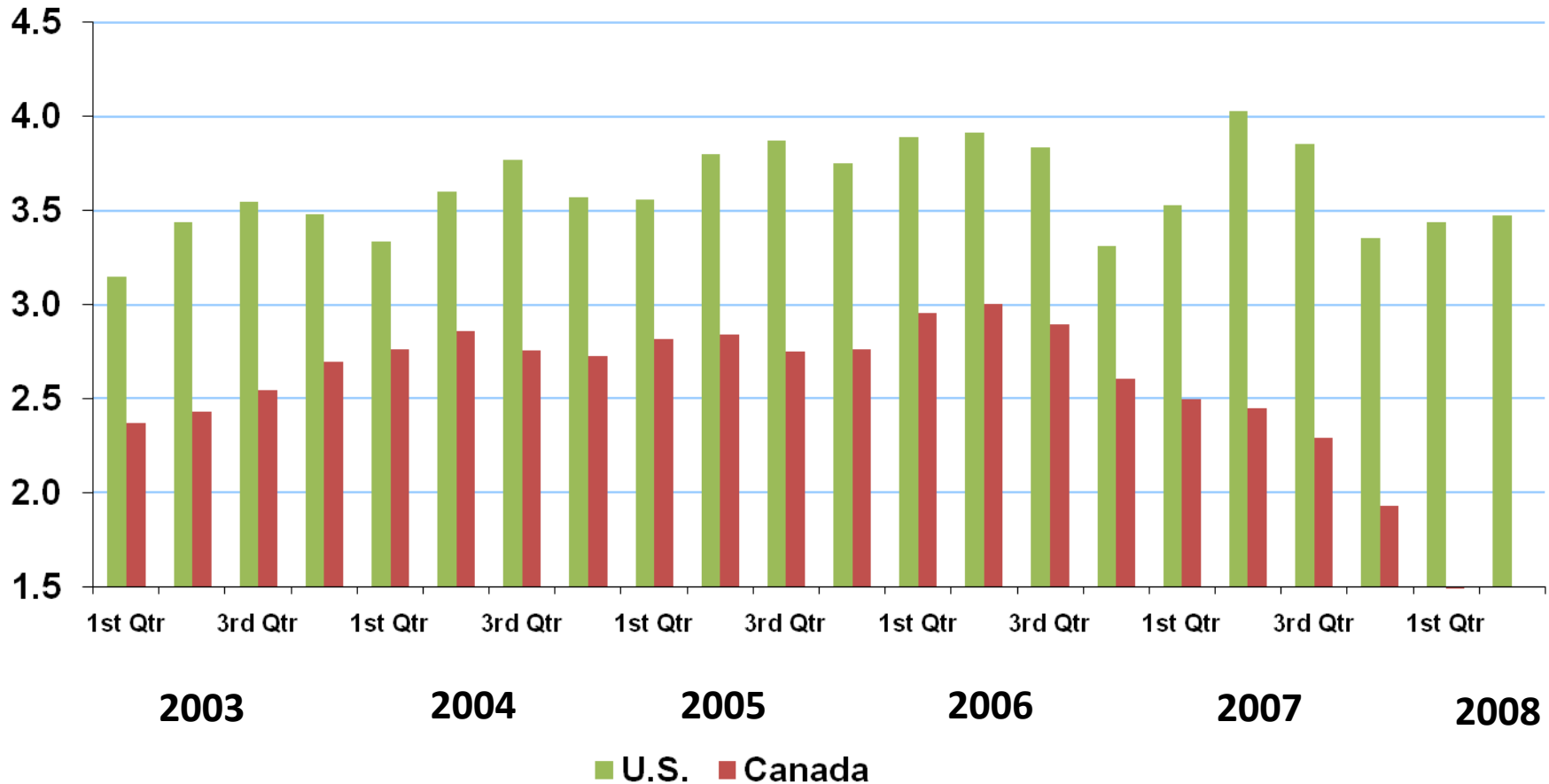
North America Plywood Quarterly Production

Billion Sq Ft 3/8"



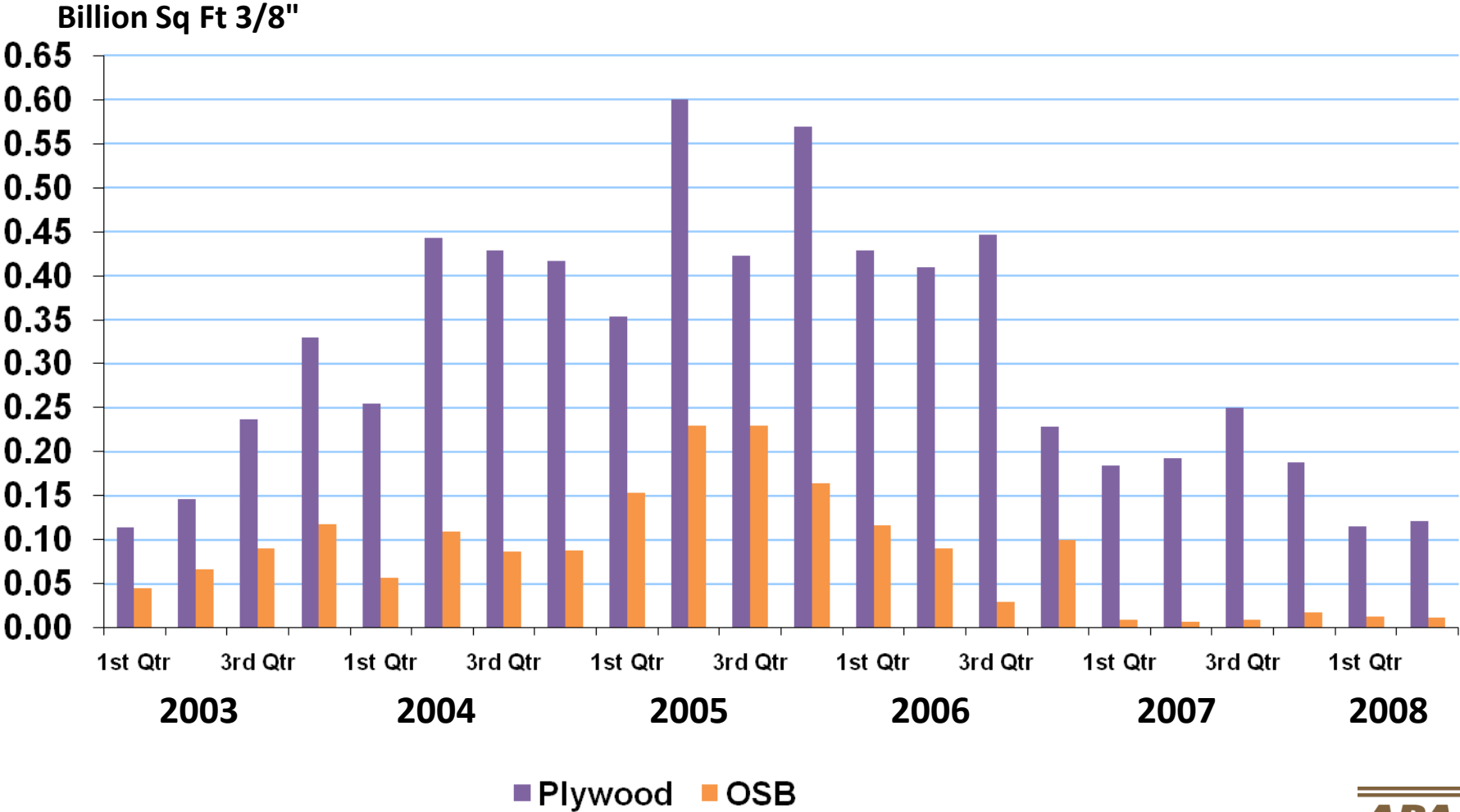
North America OSB Quarterly Production

Billion Sq Ft 3/8"



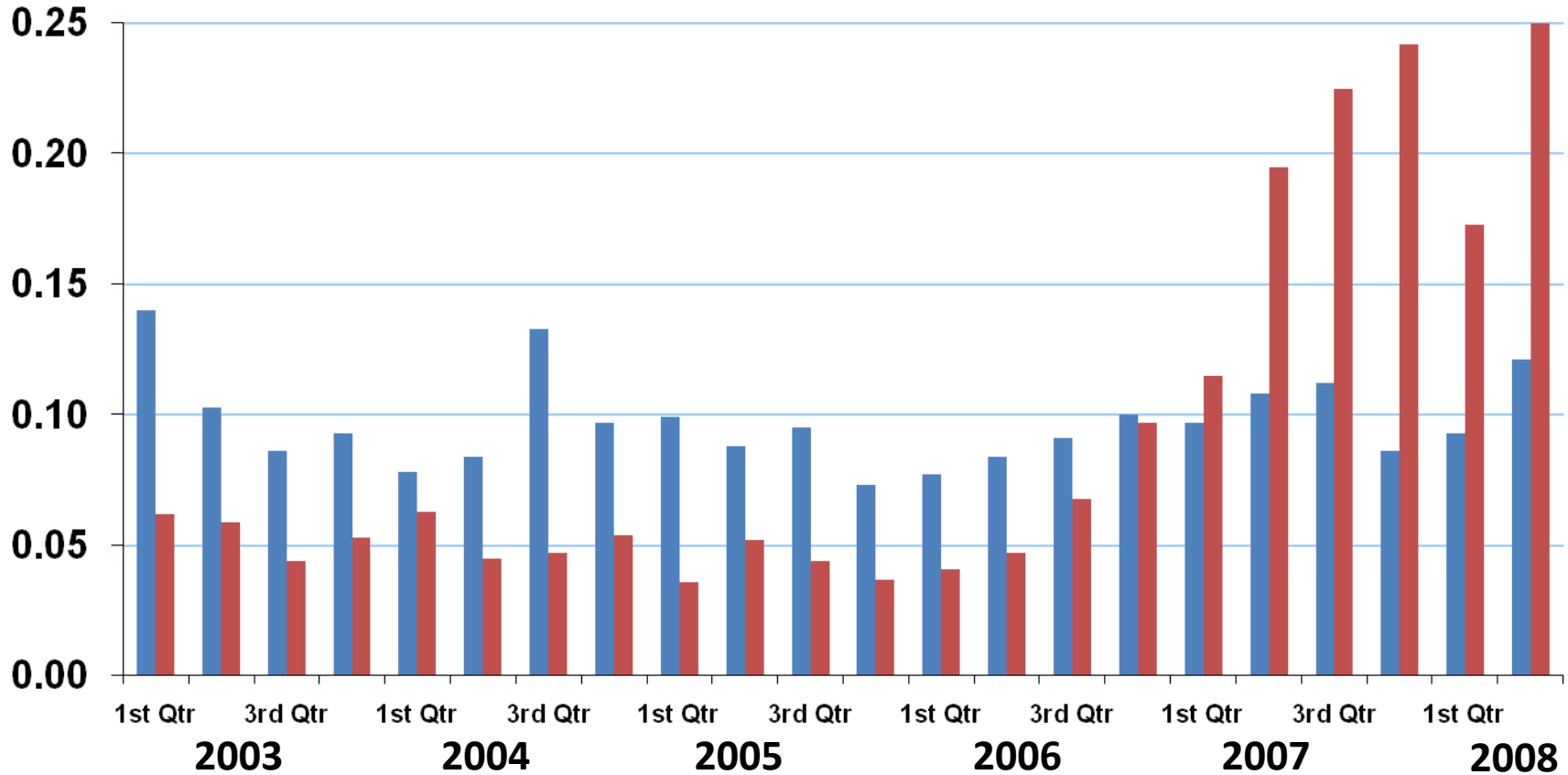
North America Offshore Imports

(Not from the U.S or Canada)



U.S. & Canada Offshore Exports

Billion Sq Ft 3/8"

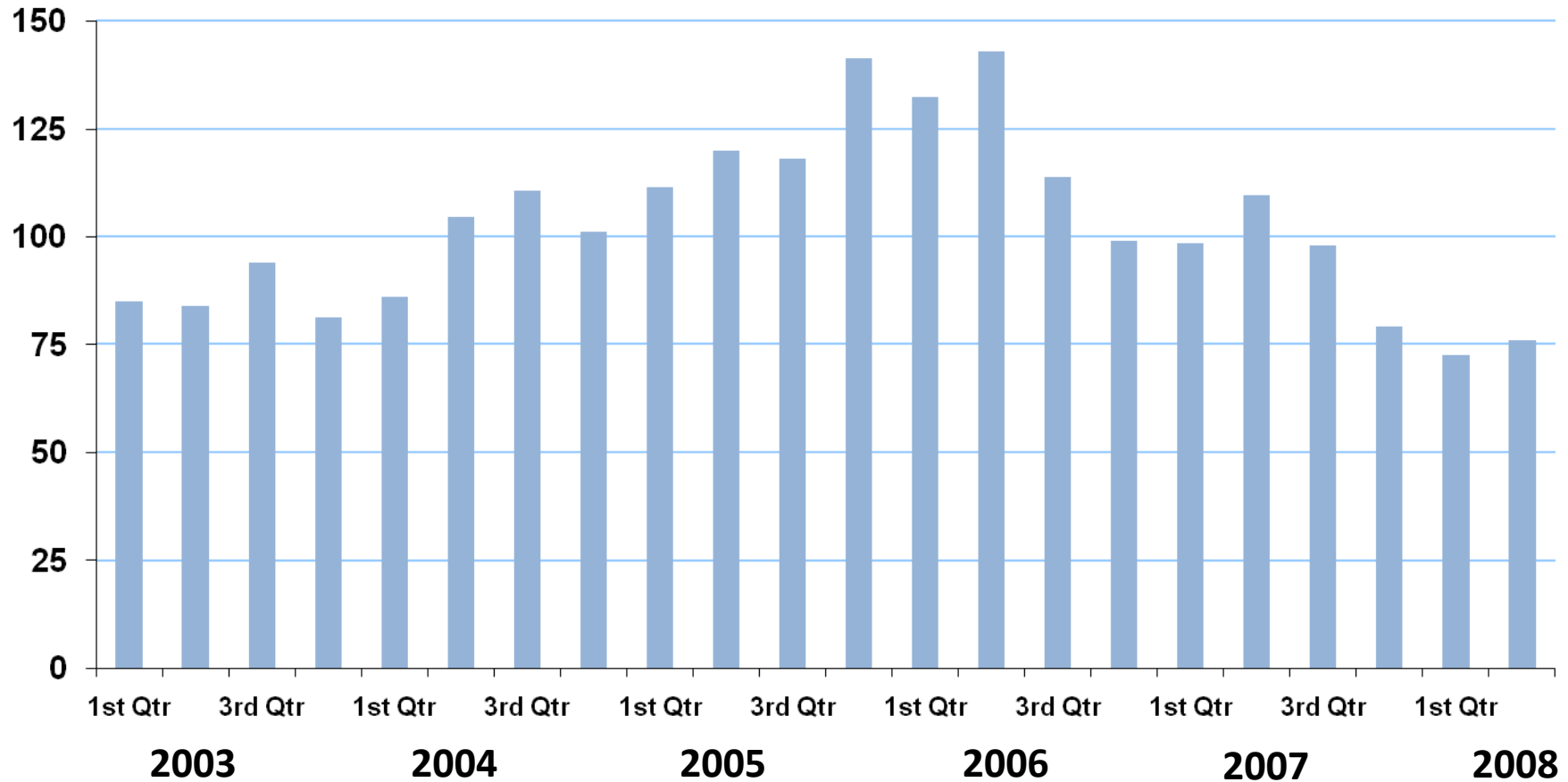


■ Plywood ■ OSB



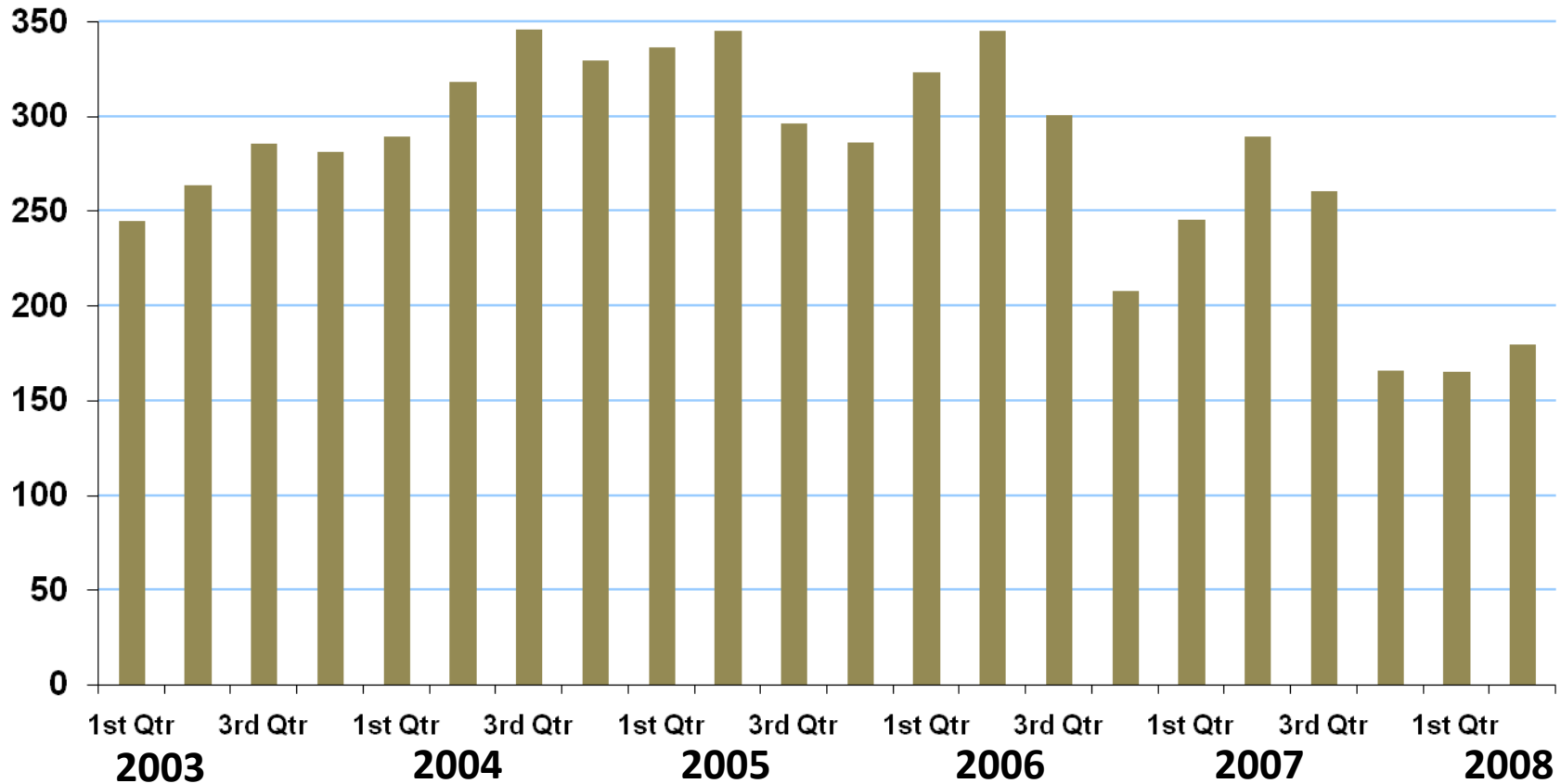
Glulam Production U.S. & Canada

Million Board Feet



I-Joist Production U.S. & Canada

Million Linear Feet



LVL Production U.S. & Canada

Million Cubic Feet

