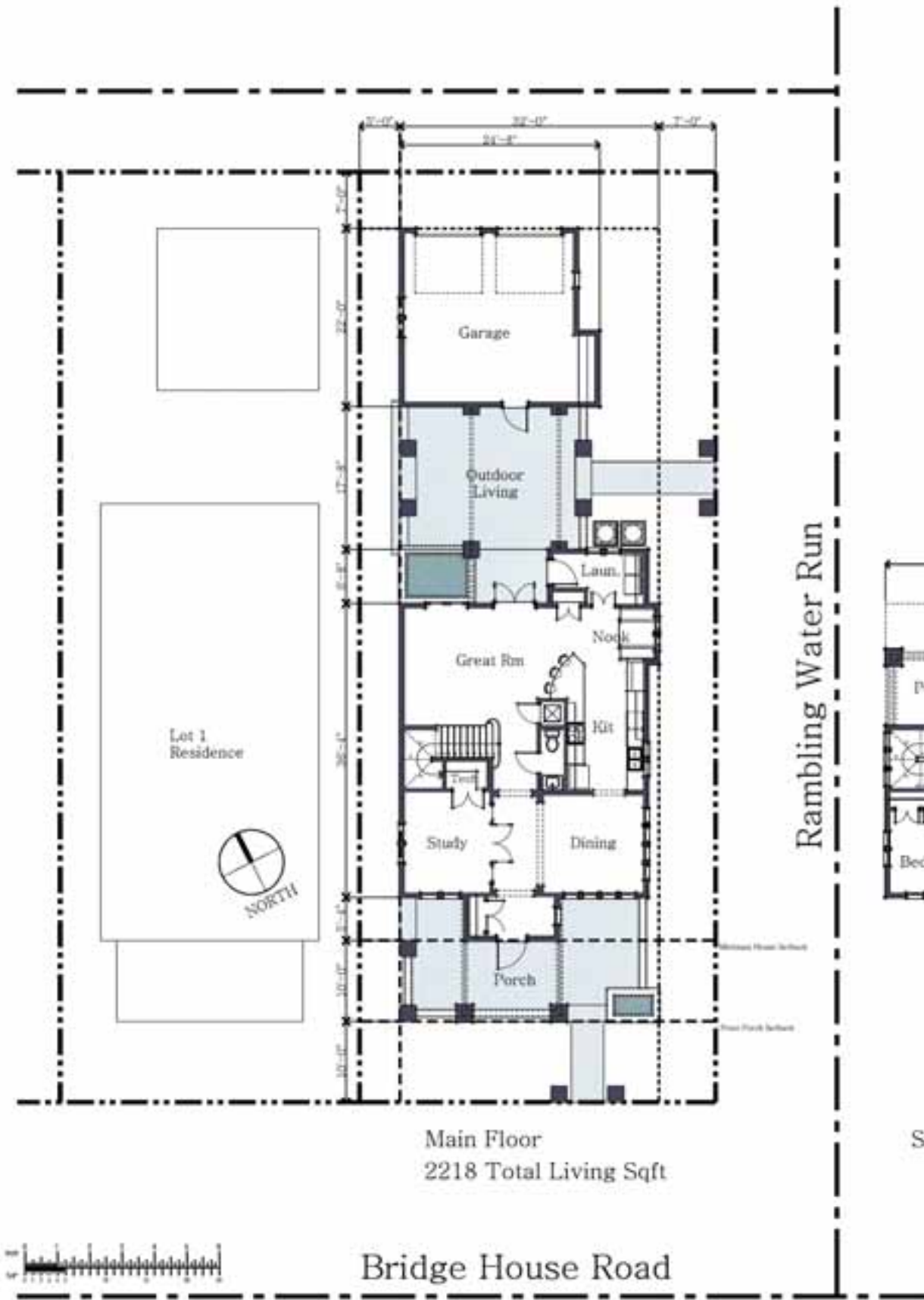




Florida Carbon Challenge - Entry No. 135





Front Elevation
Florida Carbon Challenge - Entry No. 135



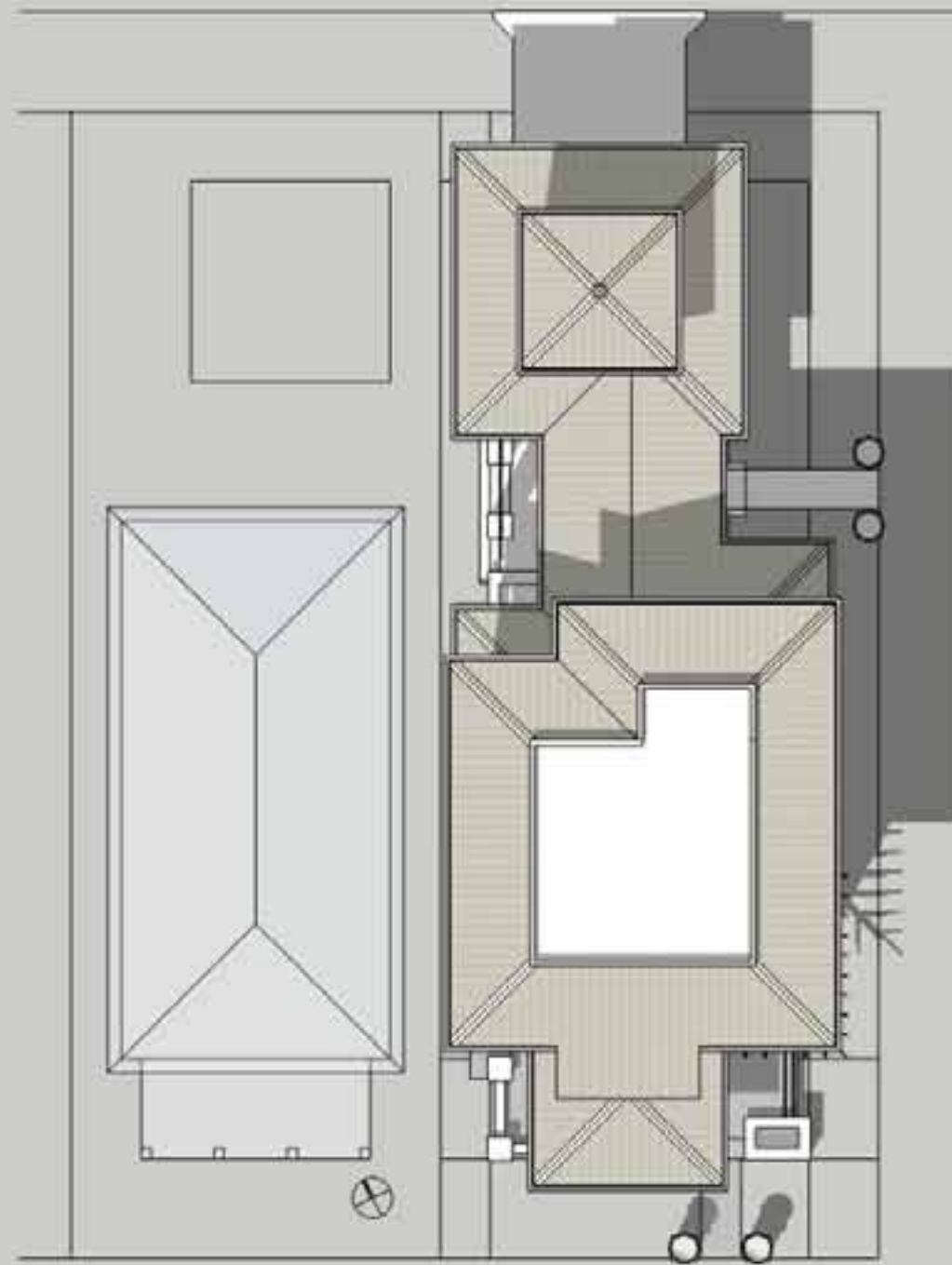
Left Side Elevation
Florida Carbon Challenge - Entry No. 135



Rear Elevation
Florida Carbon Challenge - Entry No. 135



Right Side Elevation
Florida Carbon Challenge - Entry No. 135



Roof Plan

Florida Carbon Challenge - Entry No. 135



Longitudinal Section
Florida Carbon Challenge - Entry No. 135



Latitudinal Section

Florida Carbon Challenge - Entry No. 135



TOTAL IMPACTS BY BUILDING COMPONENT	Fossil Fuel Consumption (MJ) TOTAL	GWP (tonnes CO2eq) TOTAL	Weighted Resource Use (tonnes) TOTAL	Acidification Potential (moles of H+ eq) TOTAL	HH Respiratory Effects Potential (kg PM2.5 eq) TOTAL	Eutrophication Potential (g N eq) TOTAL	Ozone Depletion Potential (mg CFC-11 eq) TOTAL	Smog Potential (kg NOx eq) TOTAL
FOUNDATIONS & FOOTINGS	56203	6	62	2155	15	1461	15	20
WHOLE BUILDING TOTAL	1339885	92	292	41829	356	44028	62	398

A. FOUNDATIONS & FOOTINGS (other assembly tabs at bottom of spreadsheet)

IN THE YELLOW CELLS BELOW, ENTER THE AMOUNT OF SQUARE FOOTAGE THAT EACH ASSEMBLY USES IN YOUR BUILDING

	ASSEMBLY TYPE	FOUNDATION ENVELOPE	Square footage	Percentage of total	Fossil Fuel Consumption per ft ² (MJ)	Global Warming Potential per ft ² (kg CO2 eq)	Weighted Resource Use per ft ² (kg)	Acidification Potential per ft ² (moles of H+ eq)	HH Respiratory Effects Potential per ft ² (g PM2.5 eq)	Eutrophication Potential per ft ² (mg N eq)	Ozone Depletion Potential per ft ² (mg CFC-11 eq)	Smog Potential per ft ² (g NOx eq)
FOUNDATION WALL												
1	8" Cast-in-Place	Vapor Barrier	320.0	100%	44.67	4.87	49.72	1.67	12.32	1,324.00	0.01	13.82
2	8" Concrete Block	Vapor Barrier	0.0		181.30	14.12	11.95	2.63	14.77	1,611.81	0.01	23.25
3	8" Cast-in-Place	R4 Polyisocyanurate Foam Continuous Insulation Vapor Barrier	0.0		47.77	5.20	49.83	1.75	12.61	1,348.91	0.01	14.32
4	8" Concrete Block	R4 Polyisocyanurate Foam Continuous Insulation Vapor Barrier	0.0		184.40	14.44	12.06	2.70	15.06	1,636.72	0.01	23.75
TOTAL FOUNDATION WALL SQUARE FOOTAGE			320.0									

FOUNDATION SLAB		Square footage										
4" Poured Concrete slab		1389.0	100%	22.12	2.50	24.65	0.86	6.01	496.78	0.01	8.54	
TOTAL FOUNDATION SLAB SQUARE FOOTAGE		1389.0										

FOOTING		Concrete volume (yd3)										
(Note: Please enter volume of concrete in cubic yards)												
Poured Concrete footing		6.0	100%	1,865.04	203.96	2,048.69	69.86	506.09	57,804.47	0.50	599.95	
FOOTING TOTAL VOLUME (CUBIC YARDS OF CONCRETE)		6.0										

Note:
Pier and beam foundations can be modeled in the Columns and Beams tab.



TOTAL IMPACTS BY BUILDING COMPONENT	Fossil Fuel Consumption (MJ) TOTAL	GWP (tonnes CO2eq) TOTAL	Weighted Resource Use (tonnes) TOTAL	Acidification Potential (moles of H+ eq) TOTAL	HH Respiratory Effects Potential (kg PM2.5 eq) TOTAL	Eutrophication Potential (g N eq) TOTAL	Ozone Depletion Potential (mg CFC-11 eq) TOTAL	Smog Potential (kg NOx eq) TOTAL
INTERMEDIATE FLOORS	78081	5	27	1735	11	3209	0	10
WHOLE BUILDING TOTAL	1339885	92	292	41829	356	44028	62	398

C. INTERMEDIATE FLOORS

IN THE YELLOW CELLS BELOW, ENTER THE AMOUNT OF SQUARE FOOTAGE THAT EACH ASSEMBLY USES IN YOUR BUILDING

	FLOOR STRUCTURE	INTERIOR OR CRAWL SPACE CEILING	Square footage	Percentage of total	Fossil Fuel Consumption per ft ² (MJ)	Global Warming Potential per ft ² (kg CO2 eq)	Weighted Resource Use per ft ² (kg)	Acidification Potential per ft ² (moles of H+ eq)	HH Respiratory Effects Potential per ft ² (g PM2.5 eq)	Eutrophication Potential per ft ² (mg N eq)	Ozone Depletion Potential per ft ² (mg CFC-11 eq)	Smog Potential per ft ² (g NOx eq)
Average across all intermediate floor assemblies:					44.36	2.94	11.34	1.82	8.33	2,613.22	0.00	28.61
1	Wood I Joist w/ OSB Decking	1/2" Gypsum Board,2 Coats Latex Paint	0.0		31.02	1.58	9.72	2.77	11.05	3,237.44	0.00	59.86
2	Wood I Joist w/ Plywood Decking	1/2" Gypsum Board,2 Coats Latex Paint	96.0	4%	25.80	1.30	8.52	1.18	7.39	1,377.38	0.00	21.17
3	Steel Joist w/ OSB Decking	1/2" Gypsum Board,2 Coats Latex Paint	0.0		63.61	4.12	10.65	2.69	12.32	3,737.14	0.00	43.76
4	Steel Joist w/ Plywood decking	1/2" Gypsum Board,2 Coats Latex Paint	0.0		58.39	3.83	9.45	1.10	8.67	1,877.09	0.00	5.07
5	Wood Joist w/ OSB Decking	1/2" Gypsum Board,2 Coats Latex Paint	0.0		29.41	1.56	12.02	2.07	9.34	2,545.26	0.00	42.29
6	Wood Joist w/ Plywood decking	1/2" Gypsum Board,2 Coats Latex Paint	0.0		24.19	1.27	10.82	0.48	5.68	685.22	0.00	3.60
7	Wood Truss w/ OSB Decking	1/2" Gypsum Board,2 Coats Latex Paint	0.0		34.47	1.97	12.87	2.19	9.84	2,694.34	0.00	42.79
8	Wood Truss w/ Plywood Decking	1/2" Gypsum Board,2 Coats Latex Paint	0.0		29.25	1.69	11.67	0.60	6.18	834.29	0.00	4.10
9	Wood I Joist w/ OSB Decking	R13 Cavity Insulation Vapor Barrier	0.0		57.40	3.89	12.39	3.36	12.94	4,548.97	0.00	61.22
10	Wood I Joist w/ Plywood Decking	R13 Cavity Insulation Vapor Barrier	0.0		52.18	3.61	11.19	1.77	9.28	2,688.91	0.00	22.53
11	Steel Joist w/ OSB Decking	R19 Cavity Insulation R6 Continuous Insulation Vapor Barrier	0.0		120.94	8.52	15.91	3.95	18.43	5,935.16	0.00	55.76
12	Steel Joist w/ Plywood decking	R19 Cavity Insulation R6 Continuous Insulation Vapor Barrier	0.0		115.72	8.24	14.71	2.36	14.77	4,075.10	0.00	17.08
13	Wood Joist w/ OSB Decking	R13 Cavity Insulation Vapor Barrier	0.0		55.80	3.87	14.70	2.66	11.23	3,856.79	0.00	43.65
14	Wood Joist w/ Plywood decking	R13 Cavity Insulation Vapor Barrier	1158.0	52%	50.58	3.59	13.50	1.07	7.57	1,996.75	0.00	4.96
15	Wood Truss w/ OSB Decking	R13 Cavity Insulation Vapor Barrier	0.0		60.86	4.29	15.54	2.78	11.73	4,005.87	0.00	44.15
16	Wood Truss w/ Plywood Decking	R13 Cavity Insulation Vapor Barrier	0.0		55.64	4.00	14.34	1.19	8.07	2,145.82	0.00	5.46

17	Wood I Joist w/ OSB Decking	Vapor Barrier	0.0		18.93	1.06	8.27	2.55	6.68	3,173.37	0.00	58.18
18	Wood I Joist w/ Plywood Decking	Vapor Barrier	0.0		13.72	0.78	7.07	0.96	3.02	1,313.32	0.00	19.49
19	Steel Joist w/ OSB Decking	Vapor Barrier	0.0		51.53	3.60	9.21	2.47	7.96	3,673.08	0.00	42.08
20	Steel Joist w/ Plywood decking	Vapor Barrier	0.0		46.31	3.31	8.01	0.88	4.30	1,813.03	0.00	3.39
21	Wood Joist w/ OSB Decking	Vapor Barrier	0.0		17.33	1.04	10.58	1.86	4.97	2,481.20	0.00	40.61
22	Wood Joist w/ Plywood decking	Vapor Barrier	0.0		12.11	0.76	9.38	0.27	1.32	621.16	0.00	1.92
23	Wood Truss w/ OSB Decking	Vapor Barrier	0.0		22.39	1.46	11.43	1.97	5.47	2,630.28	0.00	41.10
24	Wood Truss w/ Plywood Decking	Vapor Barrier	992.0	44%	17.17	1.17	10.22	0.38	1.81	770.23	0.00	2.42
TOTAL SQUARE FOOTAGE			2246.0									

Note:

Floors 1-8 represent floors with finished, uninsulated interior ceilings.

Floors 9-24 represent unfinished floors over crawl spaces, and the vapor barrier is used as ground cover.

Floors 9-16 are insulated and should be used in conjunction with uninsulated foundation walls in the Foundations & Footings tab.

Floors 17-24 are uninsulated and should be used in conjunction with insulated foundation walls in the Foundations & Footings tab.



TOTAL IMPACTS BY BUILDING COMPONENT	Fossil Fuel Consumption (MJ) TOTAL	GWP (tonnes CO2eq) TOTAL	Weighted Resource Use (tonnes) TOTAL	Acidification Potential (moles of H+ eq) TOTAL	HH Respiratory Effects Potential (kg PM2.5 eq) TOTAL	Eutrophication Potential (g N eq) TOTAL	Ozone Depletion Potential (mg CFC-11 eq) TOTAL	Smog Potential (kg NOx eq) TOTAL
EXTERIOR WALLS	318502	19	57	6576	57	8712	2	45
WHOLE BUILDING TOTAL	1339885	92	292	41829	356	44028	62	398

D. EXTERIOR WALLS

IN THE YELLOW CELLS BELOW, ENTER THE AMOUNT OF SQUARE FOOTAGE THAT EACH ASSEMBLY USES IN YOUR BUILDING

	WALL TYPE	WALL ENVELOPE	Square footage	Percentage of total	Fossil Fuel Consumption per ft ² (MJ)	Global Warming Potential per ft ² (kg CO2 eq)	Weighted Resource Use per ft ² (kg)	Acidification Potential per ft ² (moles of H+ eq)	HH Respiratory Effects Potential per ft ² (g PM2.5 eq)	Eutrophication Potential per ft ² (mg N eq)	Ozone Depletion Potential per ft ² (mg CFC-11 eq)	Smog Potential per ft ² (g NOx eq)	
Average across exterior wall assemblies:						142.80	9.72	26.53	3.94	25.66	3,543.09	0.01	43.95
8" CONCRETE BLOCK						254.15	18.45	21.30	4.48	29.77	2,546.64	0.02	42.29
1	Concrete Block	Clay Brick Cladding w/ 1" Air Space R4 XPS Continuous Insulation 1/2" Gypsum Board + 2 Coats Latex Paint	0.0		258.73	19.32	32.55	5.26	28.66	2,462.27	0.01	45.01	
2	Concrete Block	Metal Cladding R4 XPS Continuous Insulation 1/2" Gypsum Board + 2 Coats Latex Paint	0.0		333.82	24.46	24.76	6.72	39.77	4,904.61	0.05	49.24	
3	Concrete Block	2 Coat Stucco Over Porous Surface R4 XPS Continuous Insulation 1/2" Gypsum Board + 2 Coats Latex Paint	0.0		207.15	15.53	15.98	3.17	22.16	1,864.06	0.01	33.20	
4	Concrete Block	Vinyl Siding R4 XPS Continuous Insulation 1/2" Gypsum Board + 2 Coats Latex Paint	0.0		242.82	16.88	15.74	4.22	26.12	2,104.01	0.05	35.50	
5	Concrete Block	Cedar Bevel Siding R4 XPS Continuous Insulation 1/2" Gypsum Board + 2 Coats Latex Paint	0.0		224.75	16.19	14.94	3.53	23.28	2,123.04	0.01	36.79	
6	Concrete Block	Exterior Insulated Finishing System R4 XPS Continuous Insulation 1/2" Gypsum Board + 2 Coats Latex Paint	0.0		260.48	17.40	17.45	3.96	36.64	2,185.25	0.01	57.95	
7	Concrete Block	Fiber Cement Siding R4 XPS Continuous Insulation 1/2" Gypsum Board + 2 Coats Latex Paint	0.0		225.51	17.50	18.36	4.02	28.04	2,436.39	0.02	38.89	
8	Concrete Block	Natural Stone Cladding R4 XPS Continuous Insulation 1/2" Gypsum Board + 2 Coats Latex Paint	0.0		279.90	20.32	30.61	4.95	33.48	2,293.47	0.01	41.75	
INSULATED CONCRETE FORMS						163.95	14.43	76.88	5.33	36.02	2,861.81	0.04	65.31
9	Insulated Concrete Form (R20)	Clay Brick Cladding w/ 1" Air Space 1/2" Gypsum Board + 2 Coats Latex Paint	0.0		166.82	15.03	87.29	5.99	35.68	2,700.89	0.03	69.92	
10	Insulated Concrete Form (R20)	Metal Cladding 1/2" Gypsum Board + 2 Coats Latex Paint	0.0		241.91	20.18	79.49	7.45	46.80	5,143.23	0.06	74.15	

11	Insulated Concrete Form (R20)	3 Coat Stucco Over Metal Mesh 1/2" Gypsum Board + 2 Coats Latex Paint	0.0		133.56	12.02	72.77	4.18	30.68	2,277.16	0.03	60.57
12	Insulated Concrete Form (R20)	Vinyl Siding 1/2" Gypsum Board + 2 Coats Latex Paint	0.0		150.91	12.59	70.48	4.95	33.15	2,342.64	0.06	60.41
13	Insulated Concrete Form (R20)	Cedar Bevel Siding 1/2" Gypsum Board + 2 Coats Latex Paint	0.0		132.83	11.90	69.68	4.27	30.30	2,361.66	0.03	61.70
14	Insulated Concrete Form (R20)	Fiber Cement Siding 1/2" Gypsum Board + 2 Coats Latex Paint	0.0		133.60	13.22	73.10	4.75	35.06	2,675.01	0.03	63.80
15	Insulated Concrete Form (R20)	Natural Stone Cladding 1/2" Gypsum Board + 2 Coats Latex Paint	0.0		187.99	16.03	85.34	5.69	40.50	2,532.09	0.03	66.66
2x4 STEEL STUD WALL w/ SHEATHING					142.48	9.18	19.30	3.79	25.29	4,021.06	0.01	39.21
16	Steel Stud 1-5/8 x 3-5/8 16" o.c. OSB	Clay Brick Cladding w/ 1" Air Space R5 XPS Continuous Insulation R13 Cavity Insulation Weather Resistant Barrier 1/2" Gypsum Board + 2 Coats Latex Paint	0.0		148.18	10.14	30.88	5.31	25.79	4,806.66	0.00	60.89
17	Steel Stud 1-5/8 x 3-5/8 16" o.c. OSB	Metal Cladding R5 XPS Continuous Insulation R13 Cavity Insulation Weather Resistant Barrier 1/2" Gypsum Board + 2 Coats Latex Paint	0.0		223.27	15.28	23.09	6.77	36.91	7,249.00	0.04	65.11
18	Steel Stud 1-5/8 x 3-5/8 16" o.c. OSB	3 Coat Stucco Over Metal Mesh R5 XPS Continuous Insulation R13 Cavity Insulation Weather Resistant Barrier 1/2" Gypsum Board + 2 Coats Latex Paint	0.0		114.93	7.13	16.36	3.50	20.80	4,382.93	0.00	51.53
19	Steel Stud 1-5/8 x 3-5/8 16" o.c. OSB	Vinyl Siding R5 XPS Continuous Insulation R13 Cavity Insulation Weather Resistant Barrier 1/2" Gypsum Board + 2 Coats Latex Paint	0.0		132.28	7.70	14.08	4.27	23.26	4,448.41	0.04	51.37
20	Steel Stud 1-5/8 x 3-5/8 16" o.c. OSB	Cedar Bevel Siding R5 XPS Continuous Insulation R13 Cavity Insulation Weather Resistant Barrier 1/2" Gypsum Board + 2 Coats Latex Paint	0.0		114.20	7.01	13.27	3.58	20.41	4,467.43	0.00	52.66
21	Steel Stud 1-5/8 x 3-5/8 16" o.c. OSB	Exterior Insulated Finishing System R13 Cavity Insulation Weather Resistant Barrier 1/2" Gypsum Board + 2 Coats Latex Paint	0.0		142.46	7.82	15.59	3.84	33.23	4,445.95	0.00	66.41
22	Steel Stud 1-5/8 x 3-5/8 16" o.c. OSB	Fiber Cement Siding R5 XPS Continuous Insulation R13 Cavity Insulation Weather Resistant Barrier 1/2" Gypsum Board + 2 Coats Latex Paint	0.0		114.97	8.32	16.70	4.07	25.17	4,780.78	0.01	54.76

23	Steel Stud 1-5/8 x 3-5/8 16" o.c. Plywood	Natural Stone Cladding R5 XPS Continuous Insulation R13 Cavity Insulation Weather Resistant Barrier 1/2" Gypsum Board + 2 Coats Latex Paint	0.0		164.96	10.90	27.93	3.66	27.53	3,071.08	0.00	25.04
24	Steel Stud 1-5/8 x 3-5/8 16" o.c. Plywood	Clay Brick Cladding w/ 1" Air Space R5 XPS Continuous Insulation R13 Cavity Insulation Weather Resistant Barrier 1/2" Gypsum Board + 2 Coats Latex Paint	0.0		143.79	9.90	29.87	3.97	22.71	3,239.88	0.00	28.30
25	Steel Stud 1-5/8 x 3-5/8 16" o.c. Plywood	Metal Cladding R5 XPS Continuous Insulation R13 Cavity Insulation Weather Resistant Barrier 1/2" Gypsum Board + 2 Coats Latex Paint	0.0		218.88	15.05	22.08	5.43	33.83	5,682.22	0.04	32.52
26	Steel Stud 1-5/8 x 3-5/8 16" o.c. Plywood	3 Coat Stucco Over Metal Mesh R5 XPS Continuous Insulation R13 Cavity Insulation Weather Resistant Barrier 1/2" Gypsum Board + 2 Coats Latex Paint	0.0		110.53	6.89	15.35	2.16	17.71	2,816.15	0.00	18.95
27	Steel Stud 1-5/8 x 3-5/8 16" o.c. Plywood	Vinyl Siding R5 XPS Continuous Insulation R13 Cavity Insulation Weather Resistant Barrier 1/2" Gypsum Board + 2 Coats Latex Paint	0.0		127.88	7.46	13.07	2.93	20.18	2,881.63	0.04	18.79
28	Steel Stud 1-5/8 x 3-5/8 16" o.c. Plywood	Cedar Bevel Siding R5 XPS Continuous Insulation R13 Cavity Insulation Weather Resistant Barrier 1/2" Gypsum Board + 2 Coats Latex Paint	0.0		109.81	6.77	12.26	2.24	17.33	2,900.65	0.00	20.07
29	Steel Stud 1-5/8 x 3-5/8 16" o.c. Plywood	Exterior Insulated Finishing System R13 Cavity Insulation Weather Resistant Barrier 1/2" Gypsum Board + 2 Coats Latex Paint	0.0		138.07	7.58	14.58	2.50	30.15	2,879.17	0.00	33.82
30	Steel Stud 1-5/8 x 3-5/8 16" o.c. Plywood	Fiber Cement Siding R5 XPS Continuous Insulation R13 Cavity Insulation Weather Resistant Barrier 1/2" Gypsum Board + 2 Coats Latex Paint	0.0		110.57	8.08	15.69	2.73	22.09	3,214.00	0.01	22.18
31	Steel Stud 1-5/8 x 3-5/8 16" o.c. Plywood	Natural Stone Cladding R5 XPS Continuous Insulation R13 Cavity Insulation Weather Resistant Barrier 1/2" Gypsum Board + 2 Coats Latex Paint	0.0		164.96	10.90	27.93	3.66	27.53	3,071.08	0.00	25.04
2x4 WOOD STUD WALL w/ SHEATHING					118.67	7.53	21.26	3.40	23.45	3,496.86	0.01	34.11
32	Wood Stud 2x4 16" o.c. OSB	Clay Brick Cladding w/ 1" Air Space R13 Cavity Insulation Weather Resistant Barrier 1/2" Gypsum Board + 2 Coats Latex Paint	0.0		123.17	8.43	32.76	4.81	23.69	4,174.07	0.00	52.82

33	Wood Stud 2x4 16" o.c. OSB	Metal Cladding R13 Cavity Insulation Weather Resistant Barrier 1/2" Gypsum Board + 2 Coats Latex Paint	0.0		198.25	13.57	24.97	6.28	34.81	6,616.42	0.04	57.04
34	Wood Stud 2x4 16" o.c. OSB	3 Coat Stucco Over Metal Mesh R13 Cavity Insulation Weather Resistant Barrier 1/2" Gypsum Board + 2 Coats Latex Paint	0.0		89.91	5.41	18.24	3.00	18.69	3,750.34	0.00	43.46
35	Wood Stud 2x4 16" o.c. OSB	Vinyl Siding R13 Cavity Insulation Weather Resistant Barrier 1/2" Gypsum Board + 2 Coats Latex Paint	0.0		107.26	5.99	15.96	3.78	21.16	3,815.82	0.04	43.30
36	Wood Stud 2x4 16" o.c. OSB	Cedar Bevel Siding R13 Cavity Insulation Weather Resistant Barrier 1/2" Gypsum Board + 2 Coats Latex Paint	0.0		89.18	5.29	15.15	3.09	18.31	3,834.85	0.00	44.59
37	Wood Stud 2x4 16" o.c. OSB	Exterior Insulated Finishing System R13 Cavity Insulation Weather Resistant Barrier 1/2" Gypsum Board + 2 Coats Latex Paint	0.0		124.91	6.51	17.66	3.51	31.67	3,897.06	0.00	65.76
38	Wood Stud 2x4 16" o.c. OSB	Fiber Cement Siding R13 Cavity Insulation Weather Resistant Barrier 1/2" Gypsum Board + 2 Coats Latex Paint	0.0		89.95	6.61	18.58	3.58	23.07	4,148.20	0.01	46.69
39	Wood Stud 2x4 16" o.c. OSB	Natural Stone Cladding R13 Cavity Insulation Weather Resistant Barrier 1/2" Gypsum Board + 2 Coats Latex Paint	0.0		144.34	9.43	30.82	4.51	28.51	4,005.28	0.00	49.55
40	Wood Stud 2x4 16" o.c. Plywood	Clay Brick Cladding w/ 1" Air Space R13 Cavity Insulation Weather Resistant Barrier 1/2" Gypsum Board + 2 Coats Latex Paint	0.0		118.77	8.19	31.75	3.48	20.61	2,607.29	0.00	20.23
41	Wood Stud 2x4 16" o.c. Plywood	Metal Cladding R13 Cavity Insulation Weather Resistant Barrier 1/2" Gypsum Board + 2 Coats Latex Paint	0.0		193.86	13.33	23.96	4.94	31.72	5,049.63	0.04	24.45
42	Wood Stud 2x4 16" o.c. Plywood	3 Coat Stucco Over Metal Mesh R13 Cavity Insulation Weather Resistant Barrier 1/2" Gypsum Board + 2 Coats Latex Paint	0.0		85.51	5.18	17.23	1.66	15.61	2,183.56	0.00	10.87
43	Wood Stud 2x4 16" o.c. Plywood	Vinyl Siding R13 Cavity Insulation Weather Resistant Barrier 1/2" Gypsum Board + 2 Coats Latex Paint	0.0		102.86	5.75	14.95	2.44	18.07	2,249.04	0.04	10.71
44	Wood Stud 2x4 16" o.c. Plywood	Cedar Bevel Siding R13 Cavity Insulation Weather Resistant Barrier 1/2" Gypsum Board + 2 Coats Latex Paint	0.0		84.79	5.05	14.14	1.75	15.23	2,268.07	0.00	12.00
45	Wood Stud 2x4 16" o.c. Plywood	Exterior Insulated Finishing System R13 Cavity Insulation Weather Resistant Barrier 1/2" Gypsum Board + 2 Coats Latex Paint	0.0		120.52	6.27	16.65	2.17	28.59	2,330.27	0.00	33.17

46	Wood Stud 2x4 16" o.c. Plywood	Fiber Cement Siding R13 Cavity Insulation Weather Resistant Barrier 1/2" Gypsum Board + 2 Coats Latex Paint	0.0		85.55	6.37	17.57	2.24	19.99	2,581.41	0.01	14.10
47	Wood Stud 2x4 16" o.c. Plywood	Natural Stone Cladding R13 Cavity Insulation Weather Resistant Barrier 1/2" Gypsum Board + 2 Coats Latex Paint	0.0		139.94	9.19	29.81	3.17	25.43	2,438.49	0.00	16.96
2x6 WOOD STUD WALL w/ SHEATHING					119.41	7.59	22.46	3.42	23.50	3,568.27	0.01	34.28
48	Wood Stud 2x6 24" o.c. OSB	Clay Brick Cladding w/ 1" Air Space R13 Cavity Insulation Weather Resistant Barrier 1/2" Gypsum Board + 2 Coats Latex Paint	0.0		123.91	8.48	33.96	4.83	23.74	4,245.48	0.00	52.99
49	Wood Stud 2x6 24" o.c. OSB	Metal Cladding R13 Cavity Insulation Weather Resistant Barrier 1/2" Gypsum Board + 2 Coats Latex Paint	0.0		199.00	13.63	26.17	6.29	34.86	6,687.83	0.04	57.21
50	Wood Stud 2x6 24" o.c. OSB	3 Coat Stucco Over Metal Mesh R13 Cavity Insulation Weather Resistant Barrier 1/2" Gypsum Board + 2 Coats Latex Paint	0.0		90.65	5.47	19.45	3.02	18.75	3,821.75	0.00	43.64
51	Wood Stud 2x6 24" o.c. OSB	Vinyl Siding R13 Cavity Insulation Weather Resistant Barrier 1/2" Gypsum Board + 2 Coats Latex Paint	0.0		108.00	6.04	17.16	3.79	21.21	3,887.23	0.04	43.48
52	Wood Stud 2x6 24" o.c. OSB	Cedar Bevel Siding R13 Cavity Insulation Weather Resistant Barrier 1/2" Gypsum Board + 2 Coats Latex Paint	0.0		89.92	5.35	16.35	3.10	18.36	3,906.26	0.00	44.76
53	Wood Stud 2x6 24" o.c. OSB	Exterior Insulated Finishing System R13 Cavity Insulation Weather Resistant Barrier 1/2" Gypsum Board + 2 Coats Latex Paint	0.0		125.65	6.56	18.86	3.53	31.72	3,968.47	0.00	65.93
54	Wood Stud 2x6 24" o.c. OSB	Fiber Cement Siding R13 Cavity Insulation Weather Resistant Barrier 1/2" Gypsum Board + 2 Coats Latex Paint	0.0		90.69	6.66	19.78	3.59	23.12	4,219.61	0.01	46.87
55	Wood Stud 2x6 24" o.c. OSB	Natural Stone Cladding R13 Cavity Insulation Weather Resistant Barrier 1/2" Gypsum Board + 2 Coats Latex Paint	0.0		145.08	9.48	32.02	4.53	28.56	4,076.69	0.00	49.73
56	Wood Stud 2x6 24" o.c. Plywood	Clay Brick Cladding w/ 1" Air Space R13 Cavity Insulation Weather Resistant Barrier 1/2" Gypsum Board + 2 Coats Latex Paint	0.0		119.51	8.24	32.95	3.49	20.66	2,678.70	0.00	20.40
57	Wood Stud 2x6 24" o.c. Plywood	Metal Cladding R13 Cavity Insulation Weather Resistant Barrier 1/2" Gypsum Board + 2 Coats Latex Paint	0.0		194.60	13.39	25.16	4.95	31.78	5,121.04	0.04	24.63
58	Wood Stud 2x6 24" o.c. Plywood	3 Coat Stucco Over Metal Mesh R13 Cavity Insulation Weather Resistant Barrier 1/2" Gypsum Board + 2 Coats Latex Paint	0.0		86.26	5.23	18.43	1.68	15.67	2,254.97	0.00	11.05



TOTAL IMPACTS BY BUILDING COMPONENT	Fossil Fuel Consumption (MJ) TOTAL	GWP (tonnes CO2eq) TOTAL	Weighted Resource Use (tonnes) TOTAL	Acidification Potential (moles of H+ eq) TOTAL	HH Respiratory Effects Potential (kg PM2.5 eq) TOTAL	Eutrophication Potential (g N eq) TOTAL	Ozone Depletion Potential (mg CFC-11 eq) TOTAL	Smog Potential (kg NOx eq) TOTAL
WINDOWS	177468	16	37	12780	143	5228	42	74
WHOLE BUILDING TOTAL	1339885	92	292	41829	356	44028	62	398

E. WINDOWS

IN THE YELLOW CELLS BELOW, ENTER THE AMOUNT OF SQUARE FOOTAGE THAT EACH ASSEMBLY USES IN YOUR BUILDING

	FRAME TYPE	DOUBLE GLAZING TYPE	Square footage	Percentage of total	Fossil Fuel Consumption per ft ² (MJ)	Global Warming Potential per ft ² (kg CO2 eq)	Weighted Resource Use per ft ² (kg)	Acidification Potential per ft ² (moles of H+ eq)	HH Respiratory Effects Potential per ft ² (g PM2.5 eq)	Eutrophication Potential per ft ² (mg N eq)	Ozone Depletion Potential per ft ² (mg CFC-11 eq)	Smog Potential per ft ² (g NOx eq)
Average across all window types:					577.01	49.53	69.91	53.35	476.44	14,790.96	0.15	264.88
1	Aluminum - Operable	Low E, Argon Filled	0.0		1,025.32	85.66	77.69	122.04	939.53	24,615.83	0.24	557.61
2	Vinyl-clad Wood - Operable	Low E, Argon Filled	501.0	100%	354.23	32.14	73.47	25.51	285.51	10,434.68	0.08	147.38
3	Vinyl - Operable	Low E, Argon Filled	0.0		487.30	39.85	43.31	27.45	291.85	10,921.85	0.20	145.23
4	Wood - Operable	Low E, Argon Filled	0.0		441.18	40.46	85.16	38.40	388.88	13,191.46	0.07	209.31
TOTAL WINDOW SQUARE FOOTAGE			501.0									

Note:

Sliding glass door areas should be input as windows on this page



TOTAL IMPACTS BY BUILDING COMPONENT	Fossil Fuel Consumption (MJ) TOTAL	GWP (tonnes CO2eq) TOTAL	Weighted Resource Use (tonnes) TOTAL	Acidification Potential (moles of H+ eq) TOTAL	HH Respiratory Effects Potential (kg PM2.5 eq) TOTAL	Eutrophication Potential (g N eq) TOTAL	Ozone Depletion Potential (mg CFC-11 eq) TOTAL	Smog Potential (kg NOx eq) TOTAL
ROOF	642445	42	93	17327	109	24516	2	240
WHOLE BUILDING	1339885	92	292	41829	356	44028	62	398

G. ROOFS

IN THE YELLOW CELLS BELOW, ENTER THE AMOUNT OF SQUARE FOOTAGE THAT EACH ASSEMBLY USES IN YOUR BUILDING

	ROOF TYPE	ROOF ENVELOPE	Square footage	Percentage of total	Fossil Fuel Consumption per ft ² (MJ)	Global Warming Potential per ft ² (kg CO2 eq)	Weighted Resource Use per ft ² (kg)	Acidification Potential per ft ² (moles of H+ eq)	HH Respiratory Effects Potential per ft ² (g PM2.5 eq)	Eutrophication Potential per ft ² (mg N eq)	Ozone Depletion Potential per ft ² (mg CFC-11 eq)	Smog Potential per ft ² (g NOx eq)
Average across all roof types:					231.36	13.61	29.02	5.14	33.65	6,414.37	0.00	49.26
WOOD I-JOIST					216.70	12.44	27.05	5.35	33.01	6,391.28	0.00	61.48
1	Wood I Joist w/ Plywood Decking	Clay Tile R30 Cavity Insulation 1/2" Gypsum Board + 2 Coats Latex Paint	0.0		258.09	16.98	25.51	6.79	43.54	5,801.37	0.00	44.17
2	Wood I Joist w/ Plywood Decking	Asphalt Shingles, Fiberglass Felt based, 20 year R30 Cavity Insulation 1/2" Gypsum Board + 2 Coats Latex Paint	0.0		203.29	10.84	28.30	4.14	29.04	5,407.65	0.00	41.02
3	Wood I Joist w/ Plywood Decking	Asphalt Shingles, Fiberglass Felt based, 30 year R30 Cavity Insulation 1/2" Gypsum Board + 2 Coats Latex Paint	0.0		230.01	13.21	28.07	4.87	29.55	6,204.31	0.00	57.59
4	Wood I Joist w/ Plywood Decking	Asphalt Shingles, Organic Felt based, 20 year R30 Cavity Insulation 1/2" Gypsum Board + 2 Coats Latex Paint	0.0		224.18	11.29	28.75	4.36	30.61	5,450.29	0.00	43.23
5	Wood I Joist w/ Plywood Decking	Asphalt Shingles, Organic Felt based, 30 year R30 Cavity Insulation 1/2" Gypsum Board + 2 Coats Latex Paint	0.0		208.38	10.94	26.98	4.21	29.56	5,395.66	0.00	40.78
6	Wood I Joist w/ Plywood Decking	Metal Roofing R30 Cavity Insulation 1/2" Gypsum Board + 2 Coats Latex Paint	0.0		163.73	10.70	21.78	3.91	26.99	5,624.31	0.00	49.23
7	Wood I Joist w/ OSB Decking	Clay Tile R30 Cavity Insulation 1/2" Gypsum Board + 2 Coats Latex Paint	0.0		262.26	17.21	26.47	8.07	46.47	7,289.41	0.00	75.12
8	Wood I Joist w/ OSB Decking	Asphalt Shingles, Fiberglass Felt based, 20 year R30 Cavity Insulation 1/2" Gypsum Board + 2 Coats Latex Paint	0.0		207.46	11.07	29.26	5.41	31.96	6,895.69	0.00	71.97

9	Wood I Joist w/ OSB Decking	Asphalt Shingles, Fiberglass Felt based, 30 year R30 Cavity Insulation 1/2" Gypsum Board + 2 Coats Latex Paint	0.0		234.19	13.43	29.03	6.14	32.47	7,692.35	0.00	88.54
10	Wood I Joist w/ OSB Decking	Asphalt Shingles, Organic Felt based, 20 year R30 Cavity Insulation 1/2" Gypsum Board + 2 Coats Latex Paint	0.0		228.35	11.52	29.71	5.63	33.54	6,938.33	0.00	74.18
11	Wood I Joist w/ OSB Decking	Asphalt Shingles, Organic Felt based, 30 year R30 Cavity Insulation 1/2" Gypsum Board + 2 Coats Latex Paint	0.0		212.55	11.16	27.94	5.48	32.49	6,883.70	0.00	71.73
12	Wood I Joist w/ OSB Decking	Metal Roofing R30 Cavity Insulation 1/2" Gypsum Board + 2 Coats Latex Paint	0.0		167.91	10.93	22.75	5.18	29.91	7,112.35	0.00	80.18
STEEL JOIST					276.77	16.99	30.92	5.85	38.76	7,873.56	0.00	47.55
13	Steel Joist w/ Plywood decking	Clay Tile R38 Cavity Insulation 1/2" Gypsum Board + 2 Coats Latex Paint	0.0		318.16	21.54	29.39	7.29	49.29	7,283.65	0.00	30.25
14	Steel Joist w/ Plywood decking	Asphalt Shingles, Fiberglass Felt based, 20 year R38 Cavity Insulation 1/2" Gypsum Board + 2 Coats Latex Paint	0.0		263.36	15.39	32.17	4.64	34.78	6,889.92	0.00	27.09
15	Steel Joist w/ Plywood decking	Asphalt Shingles, Fiberglass Felt based, 30 year R38 Cavity Insulation 1/2" Gypsum Board + 2 Coats Latex Paint	0.0		290.08	17.76	31.95	5.37	35.29	7,686.58	0.00	43.67
16	Steel Joist w/ Plywood decking	Asphalt Shingles, Organic Felt based, 20 year R38 Cavity Insulation 1/2" Gypsum Board + 2 Coats Latex Paint	0.0		284.25	15.84	32.63	4.86	36.35	6,932.57	0.00	29.31
17	Steel Joist w/ Plywood decking	Asphalt Shingles, Organic Felt based, 30 year R38 Cavity Insulation 1/2" Gypsum Board + 2 Coats Latex Paint	0.0		268.45	15.49	30.86	4.70	35.31	6,877.93	0.00	26.85
18	Steel Joist w/ Plywood decking	Metal Roofing R38 Cavity Insulation 1/2" Gypsum Board + 2 Coats Latex Paint	0.0		223.80	15.26	25.66	4.40	32.73	7,106.58	0.00	35.30

19	Steel Joist w/ OSB Decking	Clay Tile R38 Cavity Insulation 1/2" Gypsum Board + 2 Coats Latex Paint	0.0		322.33	21.76	30.35	8.56	52.21	8,771.69	0.00	61.20
20	Steel Joist w/ OSB Decking	Asphalt Shingles, Fiberglass Felt based, 20 year R38 Cavity Insulation 1/2" Gypsum Board + 2 Coats Latex Paint	0.0		267.53	15.62	33.13	5.91	37.71	8,377.96	0.00	58.04
21	Steel Joist w/ OSB Decking	Asphalt Shingles, Fiberglass Felt based, 30 year R38 Cavity Insulation 1/2" Gypsum Board + 2 Coats Latex Paint	0.0		294.26	17.99	32.91	6.64	38.22	9,174.63	0.00	74.62
22	Steel Joist w/ OSB Decking	Asphalt Shingles, Organic Felt based, 20 year R38 Cavity Insulation 1/2" Gypsum Board + 2 Coats Latex Paint	0.0		288.42	16.07	33.59	6.13	39.28	8,420.61	0.00	60.26
23	Steel Joist w/ OSB Decking	Asphalt Shingles, Organic Felt based, 30 year R38 Cavity Insulation 1/2" Gypsum Board + 2 Coats Latex Paint	0.0		272.63	15.72	31.82	5.98	38.23	8,365.98	0.00	57.80
24	Steel Joist w/ OSB Decking	Metal Roofing R38 Cavity Insulation 1/2" Gypsum Board + 2 Coats Latex Paint	0.0		227.98	15.48	26.62	5.68	35.66	8,594.63	0.00	66.26
SOLID WOOD JOIST					215.09	12.42	29.35	4.65	31.30	5,699.12	0.00	43.91
25	Wood Joist w/ Plywood Decking	Clay Tile R30 Cavity Insulation 1/2" Gypsum Board + 2 Coats Latex Paint	0.0		256.48	16.96	27.82	6.10	41.83	5,109.21	0.00	26.60
26	Wood Joist w/ Plywood Decking	Asphalt Shingles, Fiberglass Felt based, 20 year R30 Cavity Insulation 1/2" Gypsum Board + 2 Coats Latex Paint	0.0		201.68	10.82	30.60	3.44	27.33	4,715.49	0.00	23.45
27	Wood Joist w/ Plywood Decking	Asphalt Shingles, Fiberglass Felt based, 30 year R30 Cavity Insulation 1/2" Gypsum Board + 2 Coats Latex Paint	0.0		228.41	13.19	30.38	4.17	27.84	5,512.15	0.00	40.02
28	Wood Joist w/ Plywood Decking	Asphalt Shingles, Organic Felt based, 20 year R30 Cavity Insulation 1/2" Gypsum Board + 2 Coats Latex Paint	0.0		222.57	11.27	31.06	3.66	28.90	4,758.13	0.00	25.66
29	Wood Joist w/ Plywood Decking	Asphalt Shingles, Organic Felt based, 30 year R30 Cavity Insulation 1/2" Gypsum Board + 2 Coats Latex Paint	0.0		206.77	10.92	29.29	3.51	27.85	4,703.50	0.00	23.21

30	Wood Joist w/ Plywood Decking	Metal Roofing R30 Cavity Insulation 1/2" Gypsum Board + 2 Coats Latex Paint	0.0		162.13	10.68	24.09	3.21	25.28	4,932.15	0.00	31.66
31	Wood Joist w/ OSB Decking	Clay Tile R30 Cavity Insulation 1/2" Gypsum Board + 2 Coats Latex Paint	0.0		260.66	17.19	28.78	7.37	44.76	6,597.24	0.00	57.55
32	Wood Joist w/ OSB Decking	Asphalt Shingles, Fiberglass Felt based, 20 year R30 Cavity Insulation 1/2" Gypsum Board + 2 Coats Latex Paint	0.0		205.86	11.04	31.56	4.72	30.25	6,203.52	0.00	54.40
33	Wood Joist w/ OSB Decking	Asphalt Shingles, Fiberglass Felt based, 30 year R30 Cavity Insulation 1/2" Gypsum Board + 2 Coats Latex Paint	0.0		232.58	13.41	31.34	5.45	30.77	7,000.18	0.00	70.97
34	Wood Joist w/ OSB Decking	Asphalt Shingles, Organic Felt based, 20 year R30 Cavity Insulation 1/2" Gypsum Board + 2 Coats Latex Paint	0.0		226.75	11.49	32.02	4.94	31.83	6,246.16	0.00	56.61
35	Wood Joist w/ OSB Decking	Asphalt Shingles, Organic Felt based, 30 year R30 Cavity Insulation 1/2" Gypsum Board + 2 Coats Latex Paint	0.0		210.95	11.14	30.25	4.78	30.78	6,191.53	0.00	54.16
36	Wood Joist w/ OSB Decking	Metal Roofing R30 Cavity Insulation 1/2" Gypsum Board + 2 Coats Latex Paint	0.0		166.30	10.91	25.05	4.48	28.20	6,420.18	0.00	62.61
WOOD TRUSS (4:12 PITCH)					216.89	12.58	28.76	4.70	31.52	5,693.51	0.00	44.09
37	Wood Truss w/ Plywood Decking, Pitched	Clay Tile R30 Cavity Insulation 1/2" Gypsum Board + 2 Coats Latex Paint	0.0		258.27	17.12	27.22	6.15	42.05	5,103.59	0.00	26.78
38	Wood Truss w/ Plywood Decking, Pitched	Asphalt Shingles, Fiberglass Felt based, 20 year R30 Cavity Insulation 1/2" Gypsum Board + 2 Coats Latex Paint	0.0		203.47	10.98	30.01	3.50	27.55	4,709.87	0.00	23.62
39	Wood Truss w/ Plywood Decking, Pitched	Asphalt Shingles, Fiberglass Felt based, 30 year R30 Cavity Insulation 1/2" Gypsum Board + 2 Coats Latex Paint	0.0		230.20	13.35	29.78	4.23	28.06	5,506.53	0.00	40.20
40	Wood Truss w/ Plywood Decking, Pitched	Asphalt Shingles, Organic Felt based, 20 year R30 Cavity Insulation 1/2" Gypsum Board + 2 Coats Latex Paint	0.0		224.36	11.43	30.46	3.72	29.12	4,752.51	0.00	25.84

41	Wood Truss w/ Plywood Decking, Pitched	Asphalt Shingles, Organic Felt based, 30 year R30 Cavity Insulation 1/2" Gypsum Board + 2 Coats Latex Paint	0.0		208.57	11.08	28.69	3.56	28.07	4,697.88	0.00	23.39
42	Wood Truss w/ Plywood Decking, Pitched	Metal Roofing R30 Cavity Insulation 1/2" Gypsum Board + 2 Coats Latex Paint	0.0		163.92	10.84	23.49	3.26	25.49	4,926.53	0.00	31.84
43	Wood Truss w/ OSB Decking, Pitched	Clay Tile R30 Cavity Insulation 1/2" Gypsum Board + 2 Coats Latex Paint	0.0		262.45	17.35	28.18	7.42	44.98	6,591.63	0.00	57.73
44	Wood Truss w/ OSB Decking, Pitched	Asphalt Shingles, Fiberglass Felt based, 20 year R30 Cavity Insulation 1/2" Gypsum Board + 2 Coats Latex Paint	0.0		207.65	11.20	30.97	4.77	30.47	6,197.91	0.00	54.57
45	Wood Truss w/ OSB Decking, Pitched	Asphalt Shingles, Fiberglass Felt based, 30 year R30 Cavity Insulation 1/2" Gypsum Board + 2 Coats Latex Paint	0.0		234.37	13.57	30.74	5.50	30.98	6,994.57	0.00	71.15
46	Wood Truss w/ OSB Decking, Pitched	Asphalt Shingles, Organic Felt based, 20 year R30 Cavity Insulation 1/2" Gypsum Board + 2 Coats Latex Paint	0.0		228.54	11.66	31.42	4.99	32.04	6,240.55	0.00	56.79
47	Wood Truss w/ OSB Decking, Pitched	Asphalt Shingles, Organic Felt based, 30 year R30 Cavity Insulation 1/2" Gypsum Board + 2 Coats Latex Paint	0.0		212.74	11.30	29.65	4.83	31.00	6,185.92	0.00	54.34
48	Wood Truss w/ OSB Decking, Pitched	Metal Roofing R30 Cavity Insulation 1/2" Gypsum Board + 2 Coats Latex Paint	3822.0	100%	168.09	11.07	24.45	4.53	28.42	6,414.57	0.00	62.79

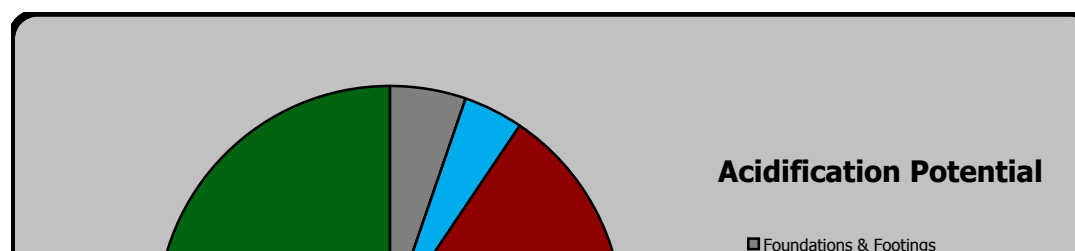
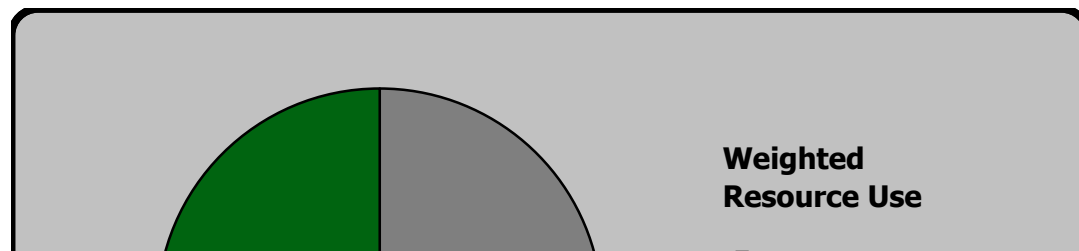
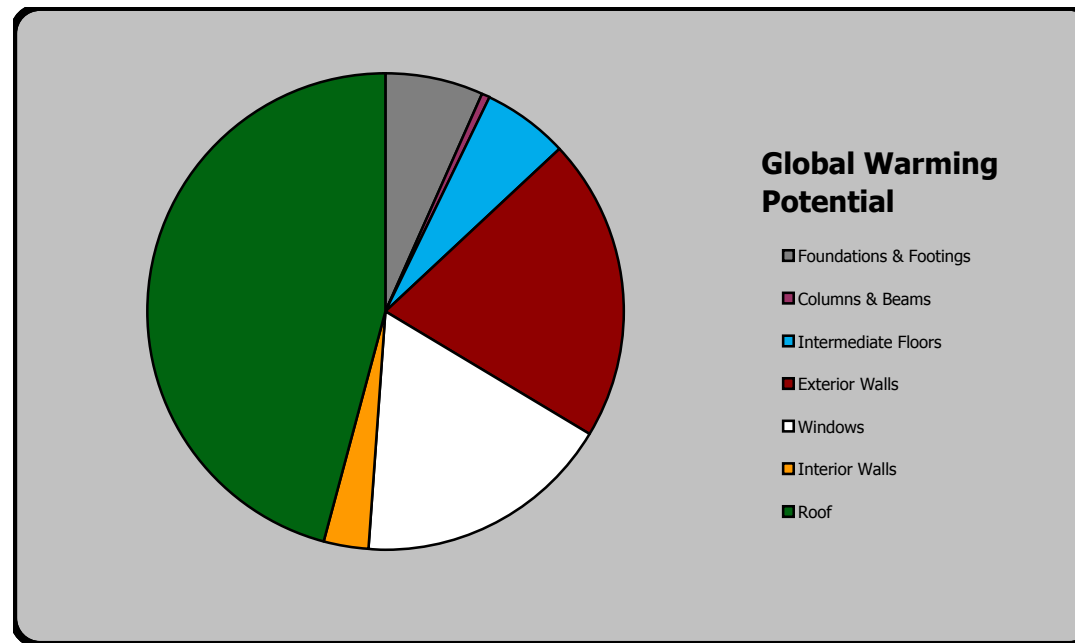
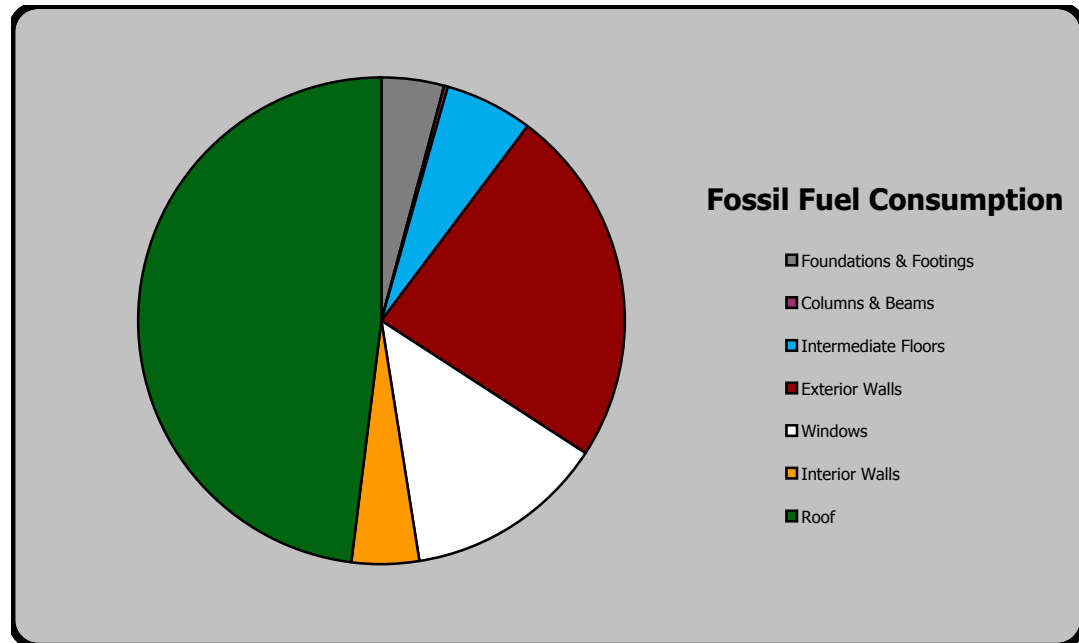
TOTAL ROOF SQUARE FOOTAGE 3822.0

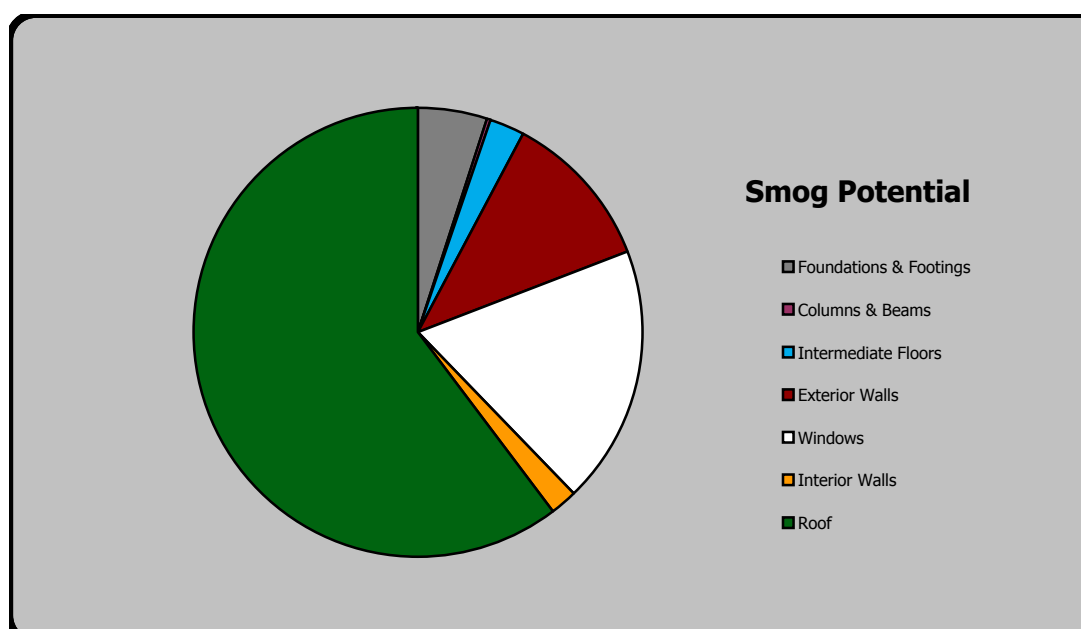
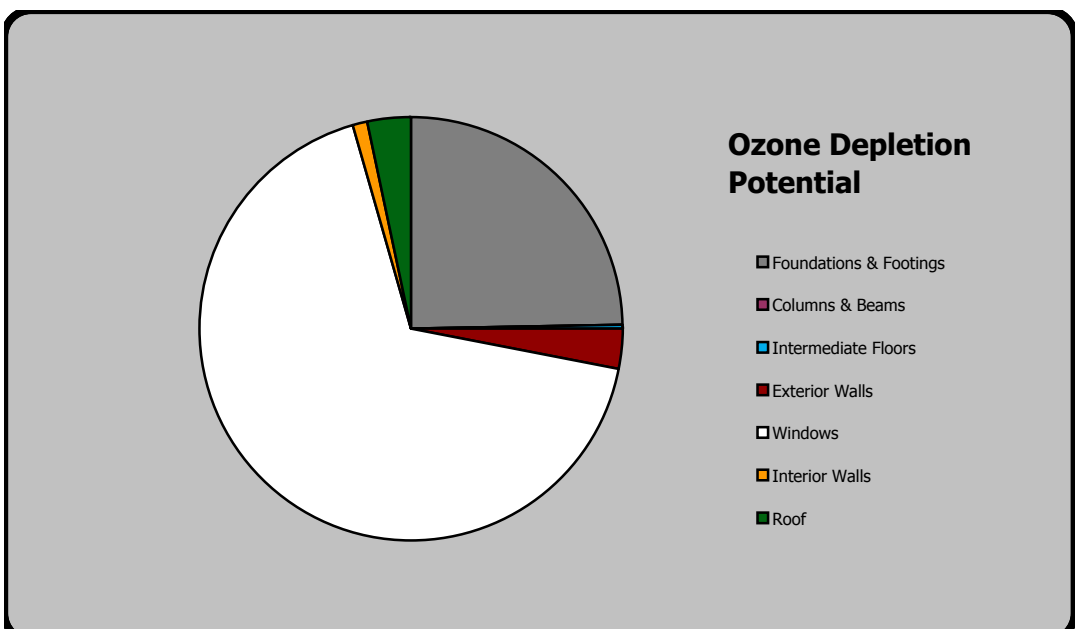
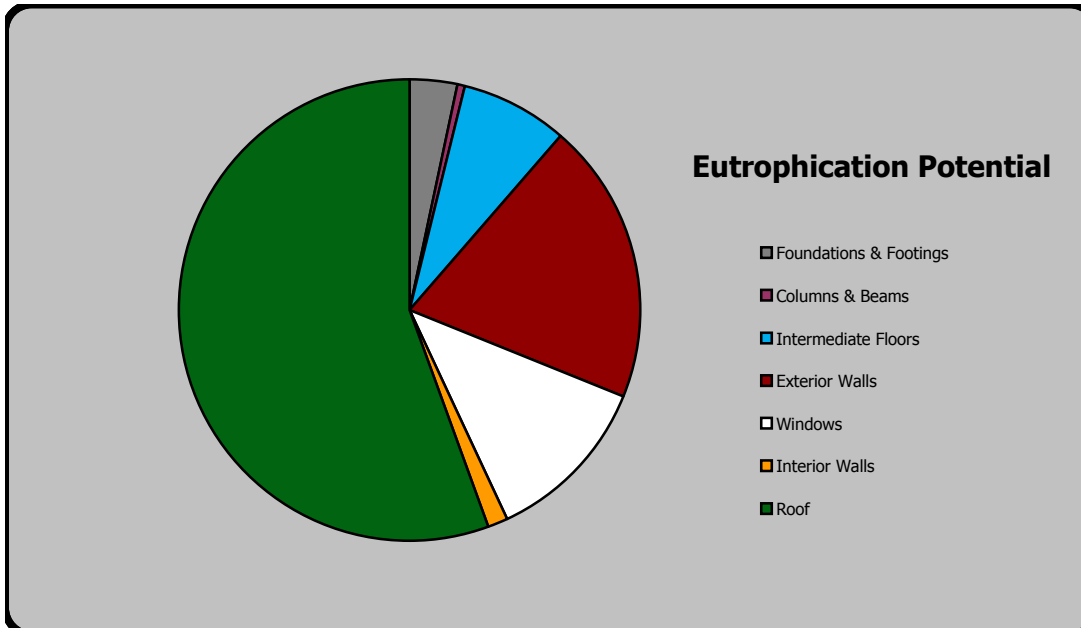
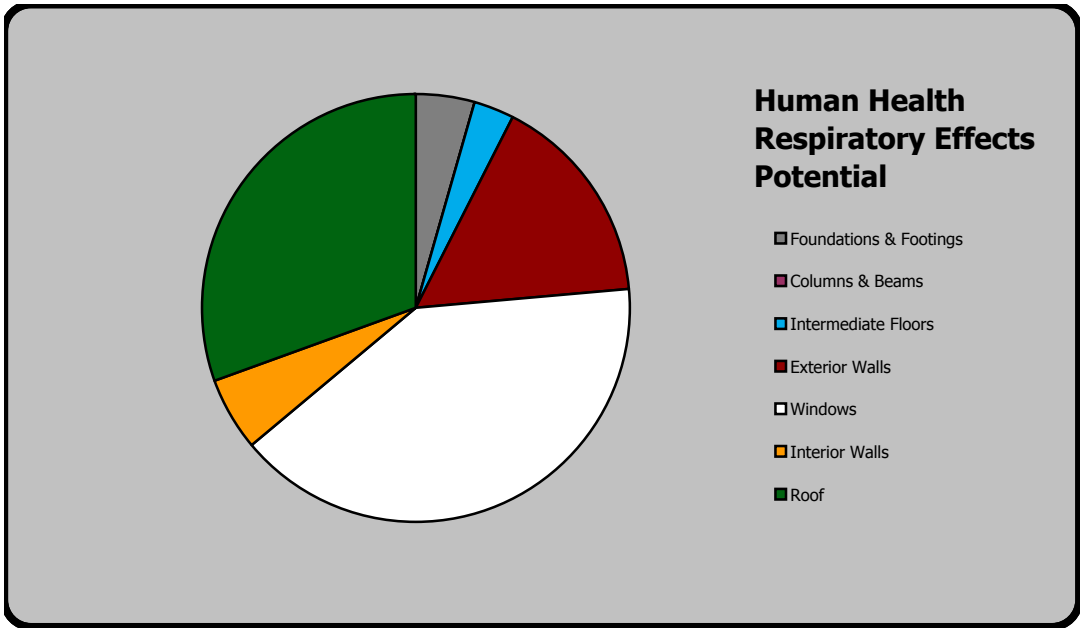
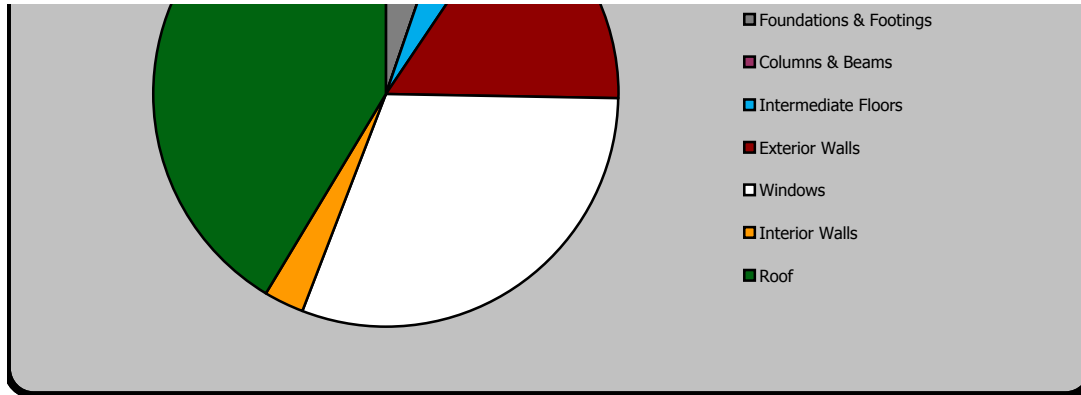
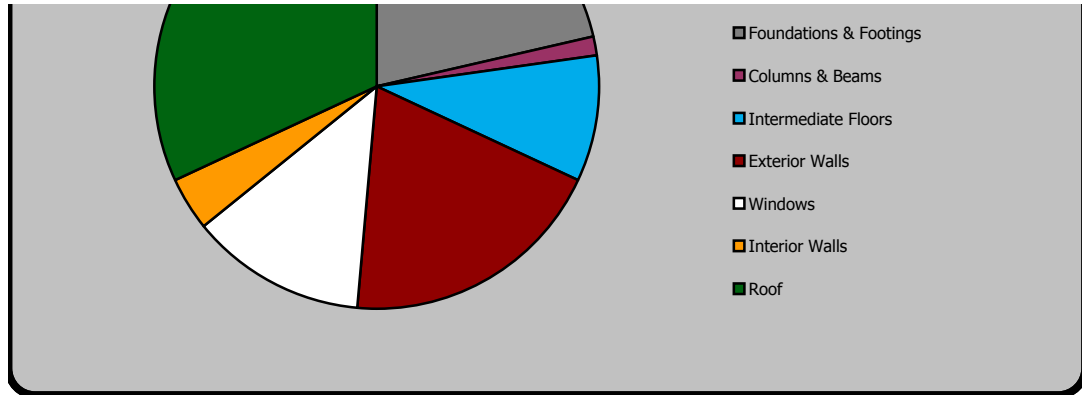
ENVIRONMENTAL IMPACT SUMMARY

ASSEMBLY	Total area	Fossil Fuel Consumption (MJ) TOTAL	GWP (tonnes CO2eq) TOTAL	Weighted Resource Use (tonnes) TOTAL	Acidification Potential (moles of H+ eq) TOTAL	HH Respiratory Effects Potential (kg PM2.5 eq) TOTAL	Eutrophication Potential (g N eq) TOTAL	Ozone Depletion Potential (mg CFC-11 eq) TOTAL	Smog Potential (kg NOx eq) TOTAL
Foundations & Footings	1709	56203	6	62	2155	15	1461	15	20
Columns & Beams	0	4593	0	4	100	0	291	0	1
Intermediate Floors	2246	78081	5	27	1735	11	3209	0	10
Exterior Walls	3724	318502	19	57	6576	57	8712	2	45
Windows	501	177468	16	37	12780	143	5228	42	74
Interior Walls	2209	62592	3	11	1157	20	612	1	8
Roof	3822	642445	42	93	17327	109	24516	2	240
TOTALS		1339885	92	292	41829	356	44028	62	398

Percentages by assembly groups
(these results are shown in the pie charts below)

Fossil Fuel Consumption	Global Warming Potential	Weighted Resource Use	Acidification Potential	Human Health Respiratory Effects Potential
4%	7%	21%	5%	4%
0%	0%	1%	0%	0%
6%	6%	9%	4%	3%
24%	21%	20%	16%	16%
13%	17%	13%	31%	40%
5%	3%	4%	3%	6%
48%	46%	32%	41%	31%







Eutrophication Potential	Ozone Depletion Potential	Smog Potential
3%	25%	5%
1%	0%	0%
7%	0%	3%
20%	3%	11%
12%	67%	19%
1%	1%	2%
56%	3%	60%