

LOCUS PLAN
(NOT TO SCALE)

REFERENCES

- DEEDS
 LOT 105: DEED BOOK 8287 PAGE 260
 LOT 104: DEED BOOK 83 PAGE 3015
 LOT 106: DEED BOOK 7865 PAGE 234
 LOT 88: DEED BOOK 8030 PAGE 344
 LOT 89: DEED BOOK 9378 PAGE 117

PLANS

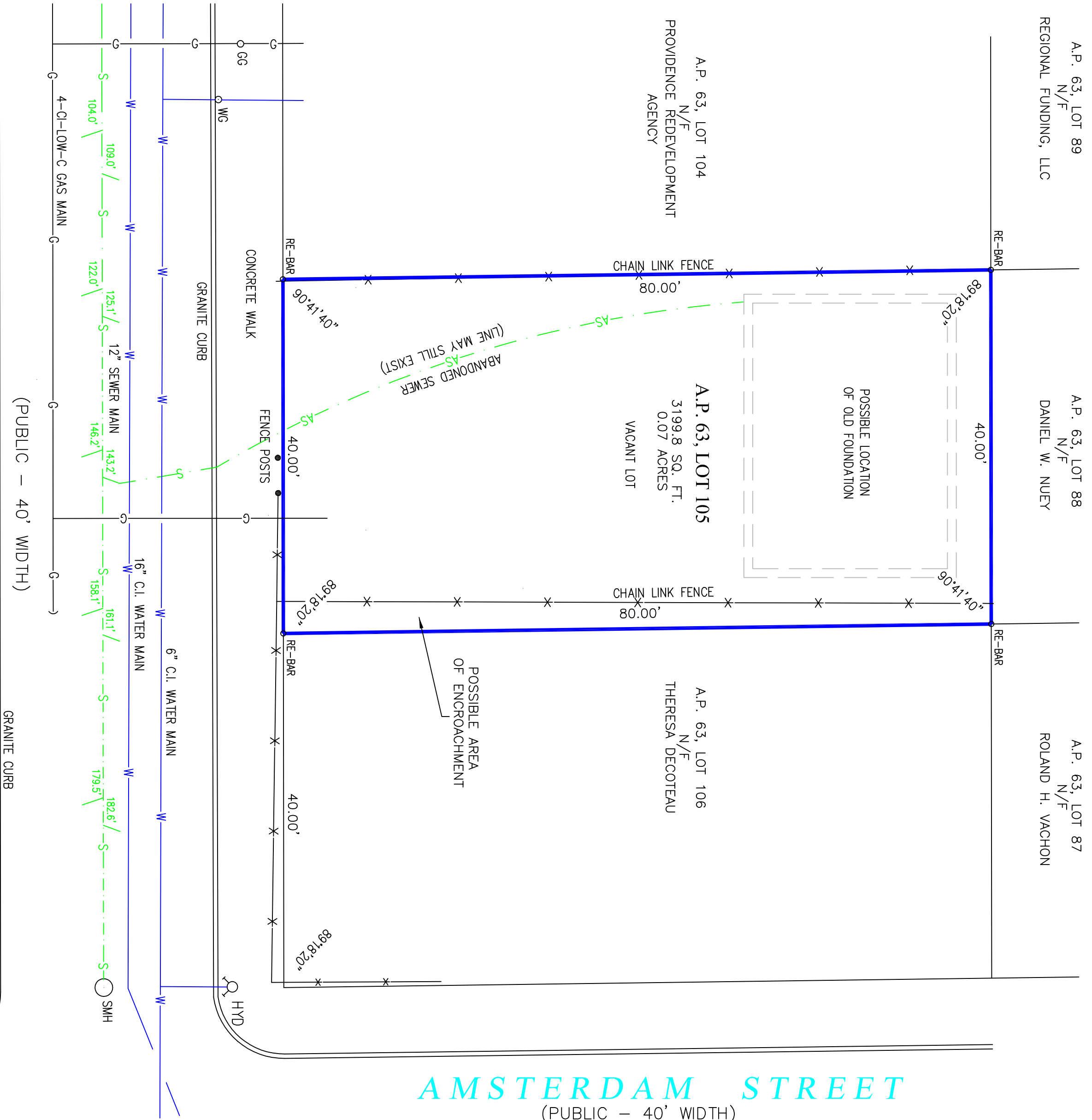
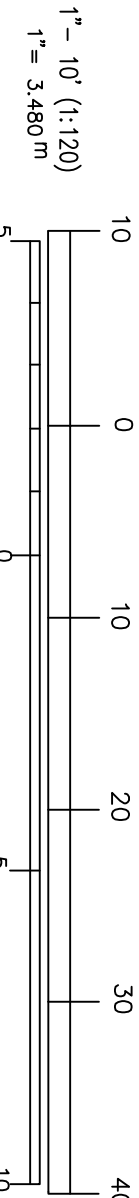
STREET LINE PLANS AS FOUND IN THE CITY OF PROVIDENCE ENGINEERING DEPARTMENT.

PLAN ENTITLED "MAP OF BUILDING LOTS AT M'PLEASANT, NORTH PROVIDENCE NEAR OLNEYVILLE, BELONGING TO ERASTUS N. STEERE, SURVEYED AND DRAWN BY WM. S. HAINES, SEPT. 16TH 1864", RECORDED ON PLAT CARD 375.

LEGEND

- ⊕ POLE #1 UTILITY POLE
- ⊕ SIGN STREET SIGN
- SMH SEWER MANHOLE
- OU— OVERHEAD UTILITIES
- W— WATER LINES
- S— SANITARY LINE
- G— GAS LINE
- AS— ABANDONED SEWER
- HD FIRE HYDRANT
- X— FENCE
- GG GAS GATE
- WG WATER GATE
- ⊕ PINE TREE

NOTE:
 UNDERGROUND UTILITIES SHOWN ARE PLOTTED FROM PLANS FURNISHED TO THIS OFFICE BY THE LOCAL UTILITY AND CITY ENGINEERING DEPARTMENTS. WE ASSUME NO RESPONSIBILITY FOR THE ACCURACY OR COMPLETENESS OF THE UTILITY INFORMATION SHOWN. THESE PLANS ARE AND SHOULD BE ASSUMED AS APPROXIMATE. THE APPROPRIATE PUBLIC UTILITY COMPANIES AND "DIG SAFE" SHOULD BE CONSULTED BEFORE ANY WORK IS DONE.



AMSTERDAM STREET
(PUBLIC - 40' WIDTH)

HANNAH STREET
(PUBLIC - 40' WIDTH)

NOTE:
 THE PROPERTY LINE INFORMATION REPRESENTED BY THIS SURVEY AND PLAN CONFORM TO A CLASS 1 STANDARD AS ADOPTED BY THE RHODE ISLAND SOCIETY OF PROFESSIONAL LAND SURVEYORS. ALL OTHER INFORMATION RELATIVE TO THE POSITION OR LOCATION OF PHYSICAL FEATURES CONFORM TO A CLASS III SURVEY.

BY _____

ZONING DISTRICT: _____
 ZONED RM

DATE	REVISIONS

SURVEY
 OF
 LAND PREPARED
 FOR

26 HANNAH STREET
 PROVIDENCE, R.I.

A.P. 63, LOT 105

DATE: JANUARY 5, 2012
 SCALE: 1" = 10'

Douglas
 DESIGN GROUP
 LAND SURVEYING • CONSULTING
 BAY TOWER - LOWER LEVEL - SUITE C
 101 PLAIN STREET
 PROVIDENCE, RHODE ISLAND 02903
 508-821-4572 774-264-0085
 douglasdesigngroup@gmail.com

© COPYRIGHT 2012
 THIS DRAWING IS THE PROPERTY OF DOUGLAS DESIGN GROUP. ANY REPRODUCTION WITHOUT THE EXPRESSED WRITTEN CONSENT FROM DOUGLAS DESIGN GROUP IS PROHIBITED.

JOHN D. ANDREWS
 BSA
 No. 18336
 PROFESSIONAL
 LAND SURVEYOR

1 OF 1